



trinity  one

**design
documentation
consultation**

‘Delivering high quality design through high end documentation’

Page Display Overview

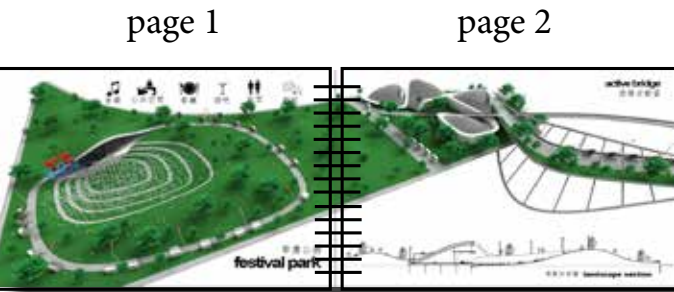
Before you get started on this document its best to note that it is designed to be printed at A3 and viewed as a double spread. what this meas essentially is its a magazine format.

The following are a culmination of works by the staff of trinity+one for a variety of architectural practises over a period of 15 years.

Some of the works were carried out as part of large teams and some soley by trinity+one staff. The work does however reflect the capacity and high skill level of trinity+one staff in both producing managing and executing architectural documentation.

Its important to recognise that the works are owned and copyright to the respective architectural practise.

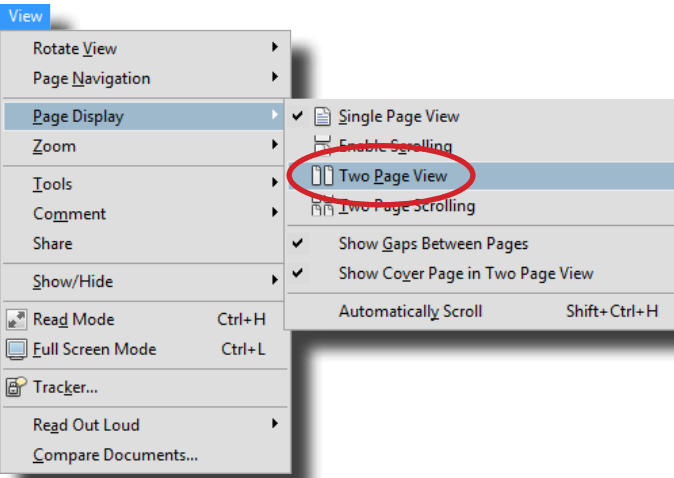
For any clarification in regards to the projects, please feel free to contact us.



So if your reading this on your screen in .pdf format you may want to click the following setting to make viewing that little bit better.

includes works for:

- John Wardle Architects
- Denton Corker Marshall
- Silver Thomas Hanly / Design Inc
- Cox Architecture
- ARM
- Fender Katsalidis Architects
- Gregory Burgess Architects
- Spowers
- Judd Lysenko Marshall
- Paul Gardiner Architects
- BPTW Partnership
- Reddy Architecture
- OBK Architects and Planners
- Inhabit Design
- PEK
- Paul Hickman Design
- Adrian Amore Architects
- trinity+one

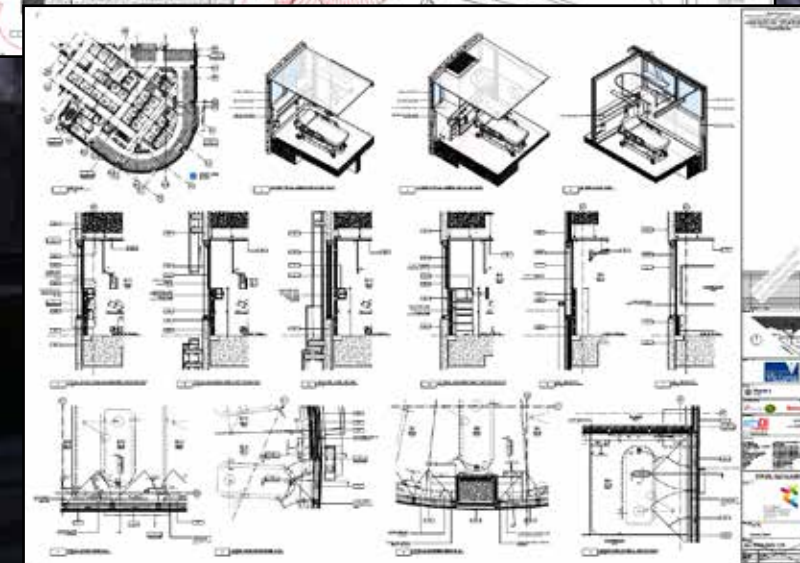
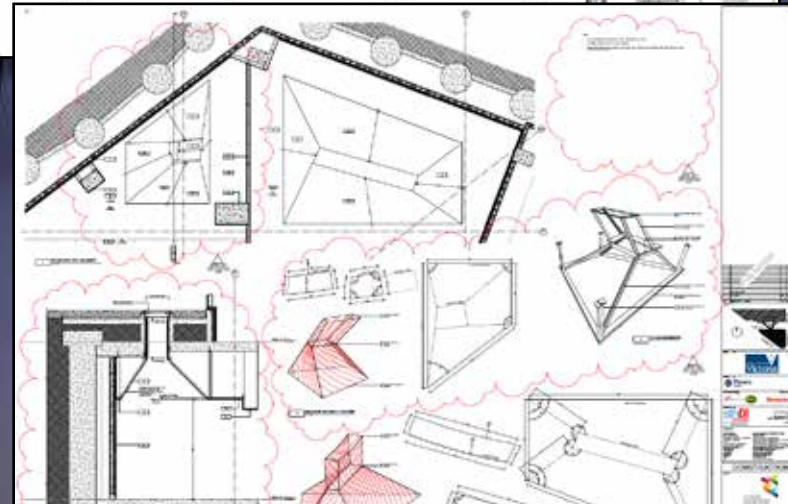
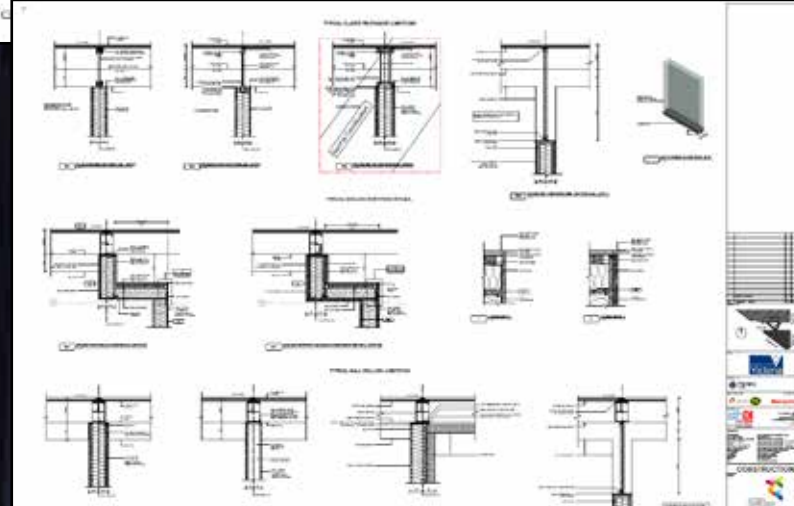
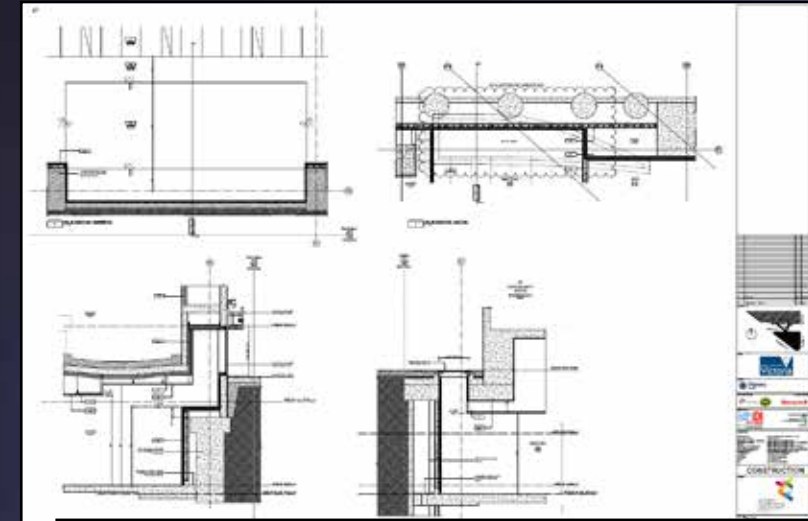


VCCC Victorian Comprehensive Cancer Centre

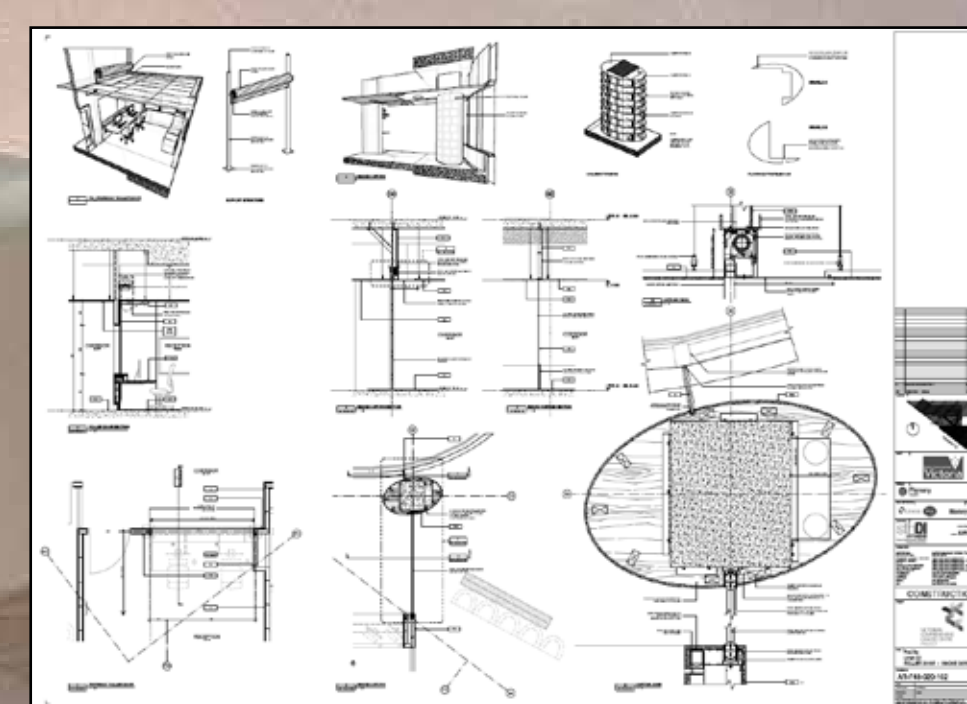
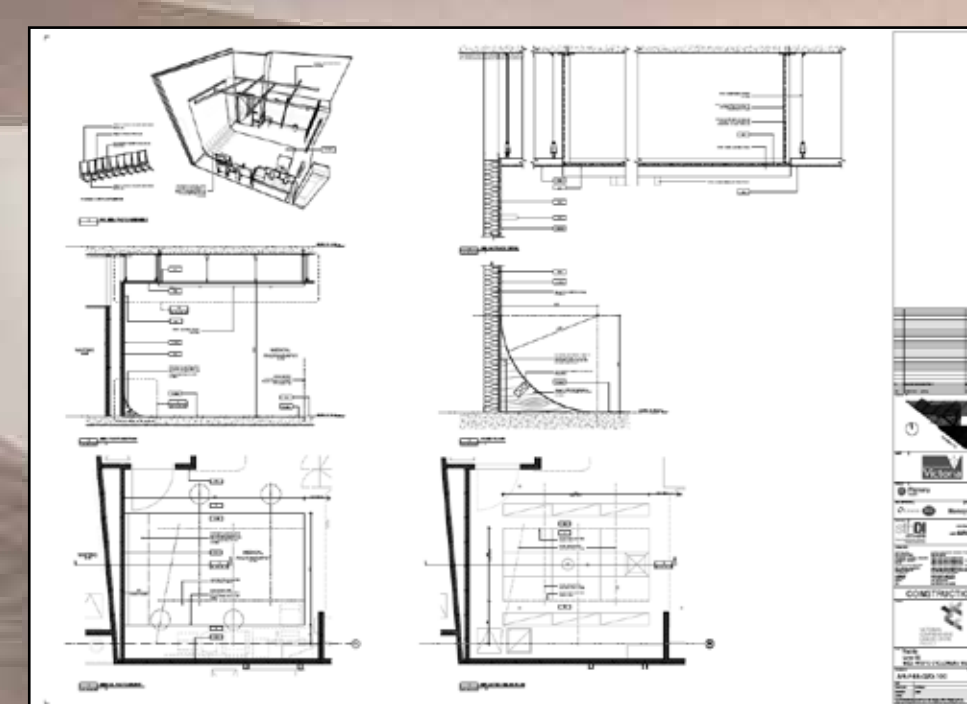
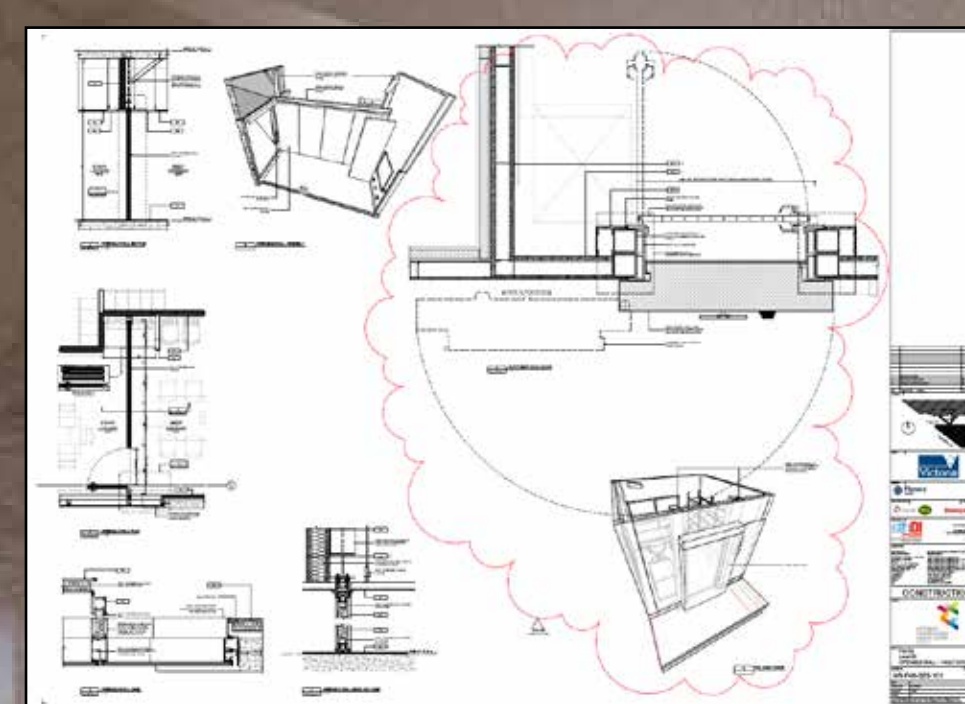
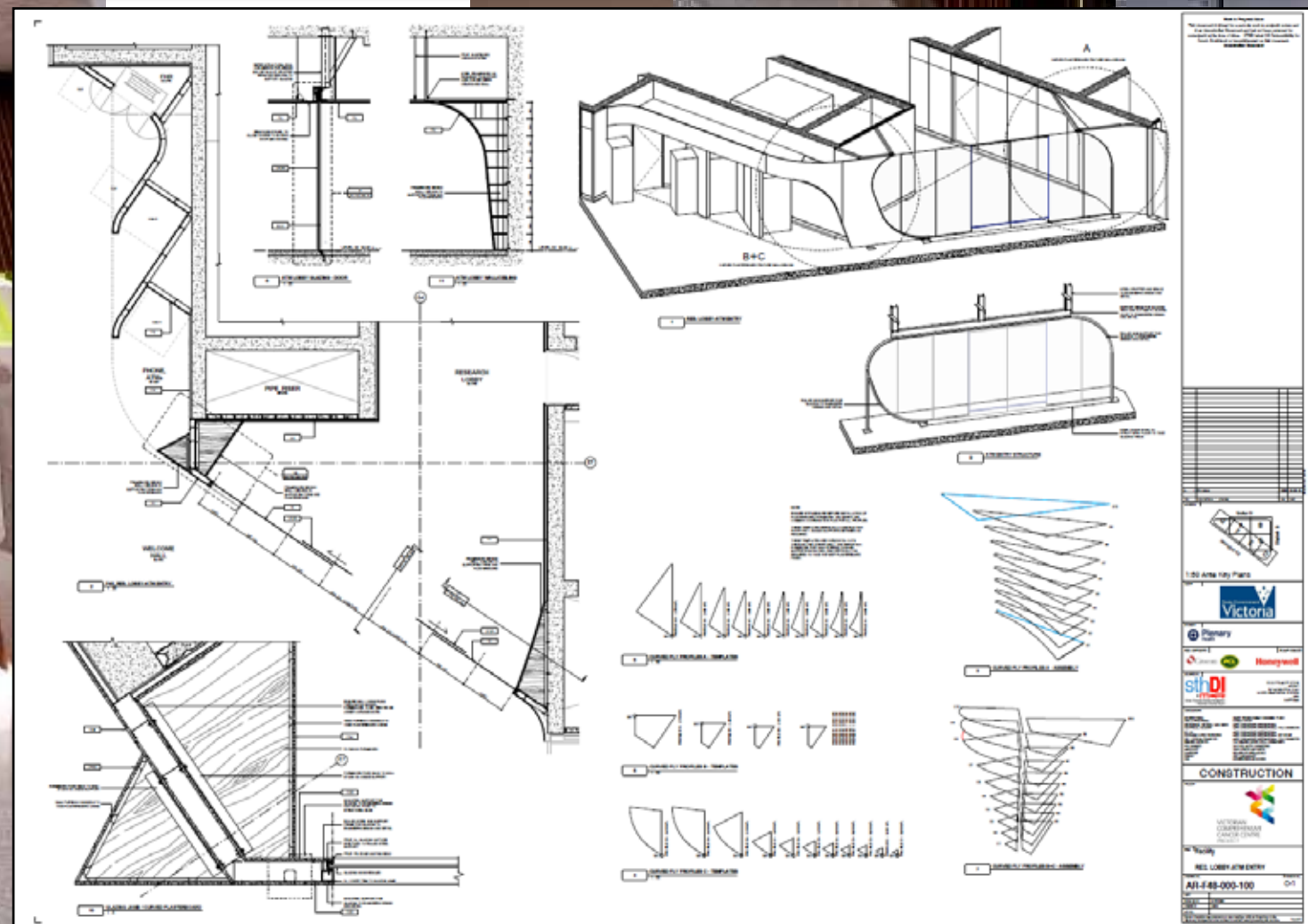
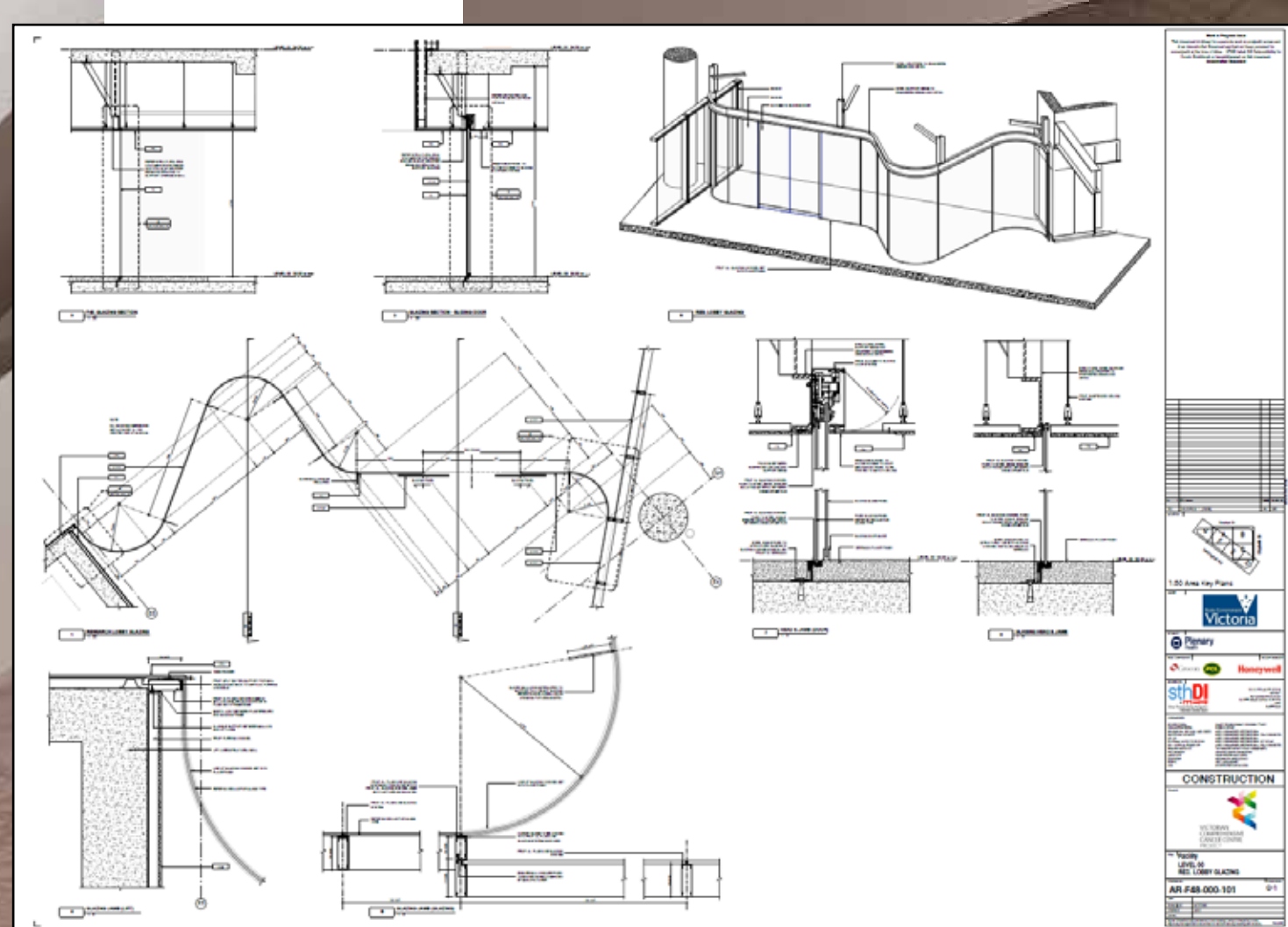
sthDI
+ m
Silver Thomas Hanley Design Inc
McBride Charles Ryan



‘Multidisciplinary coordinated
documentation’



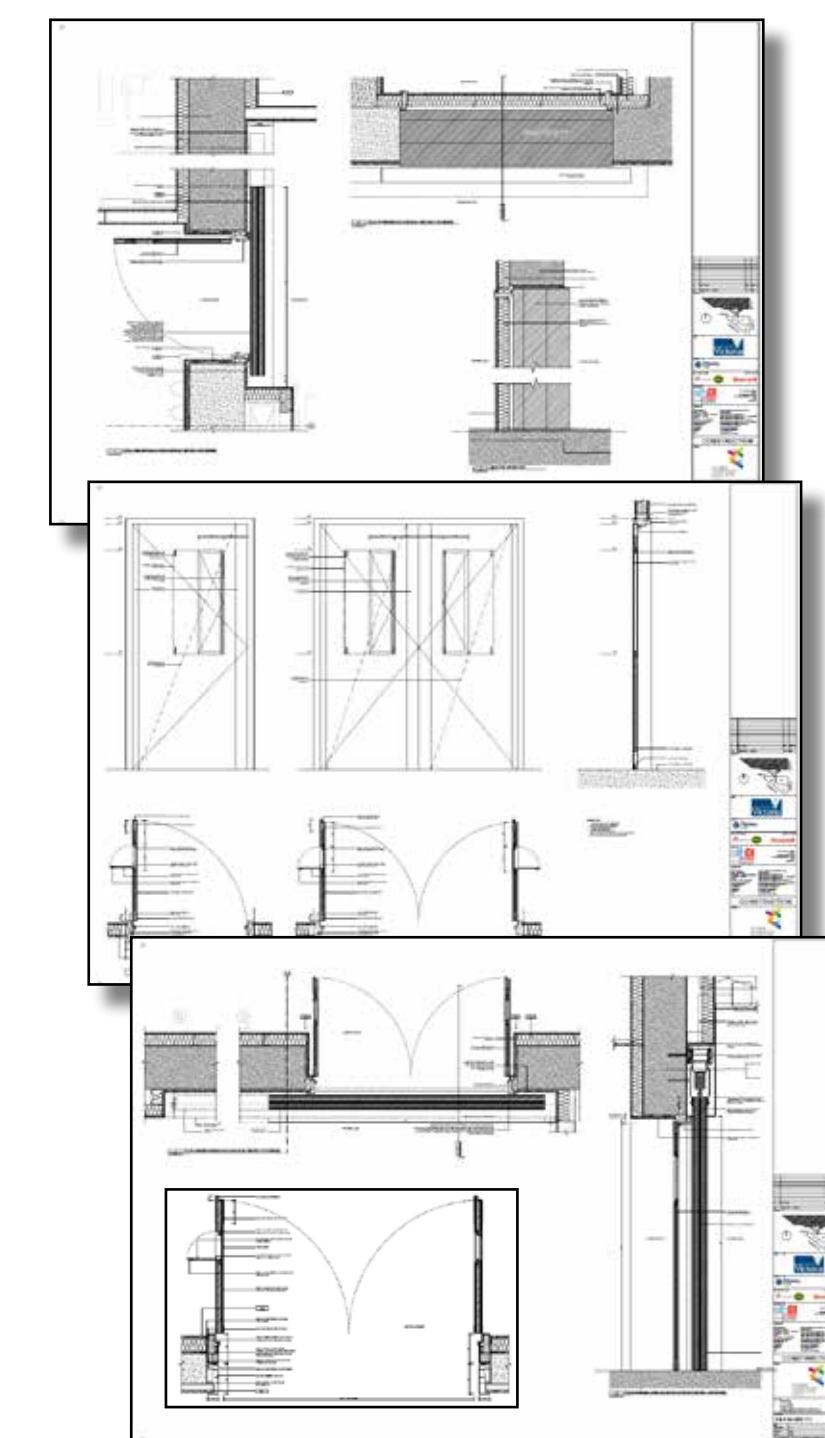
‘Multidisciplinary coordinated
documentation’



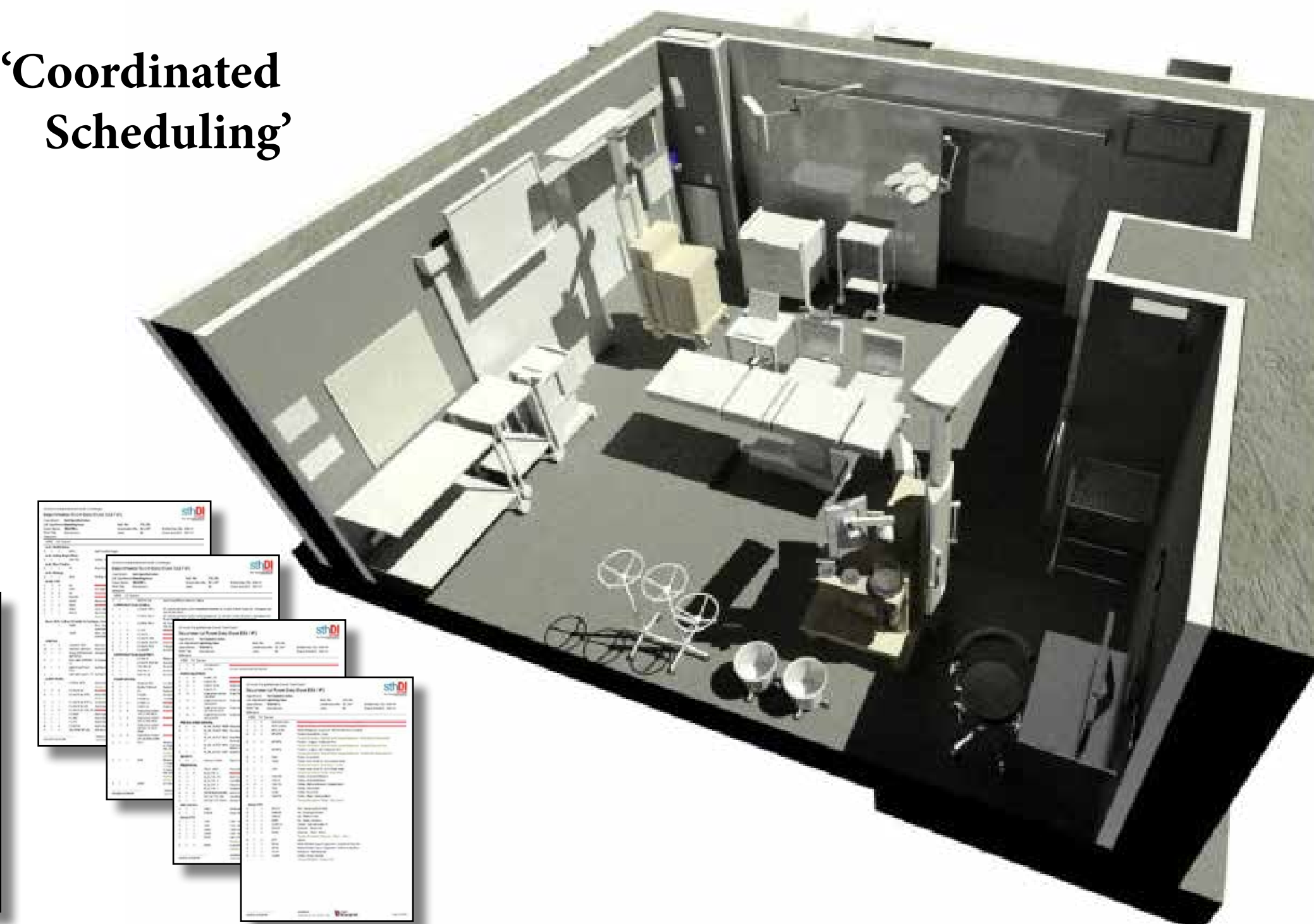
‘Complex Surface Detailing’

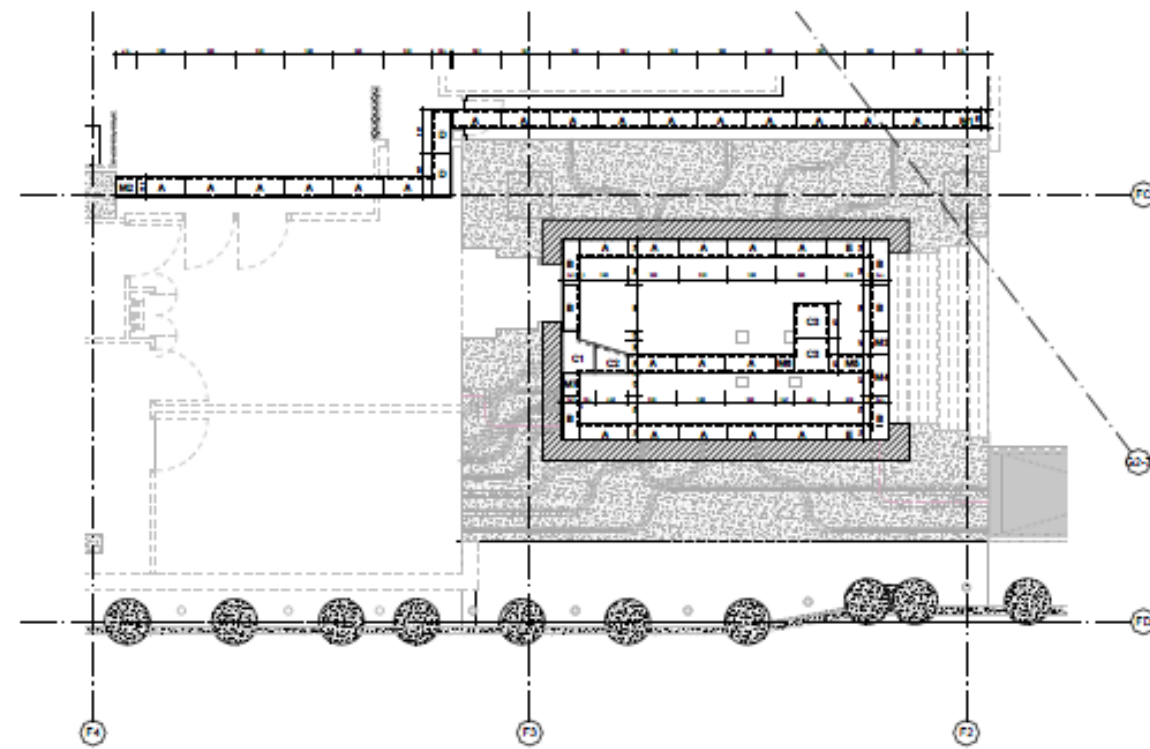


‘Specialist Functional Detailing’

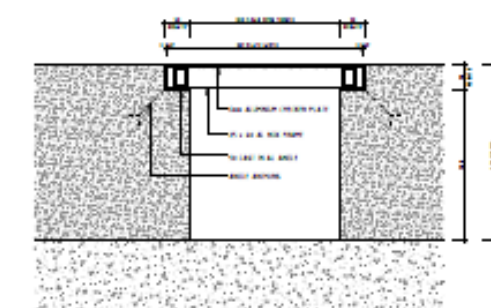


‘Coordinated Scheduling’

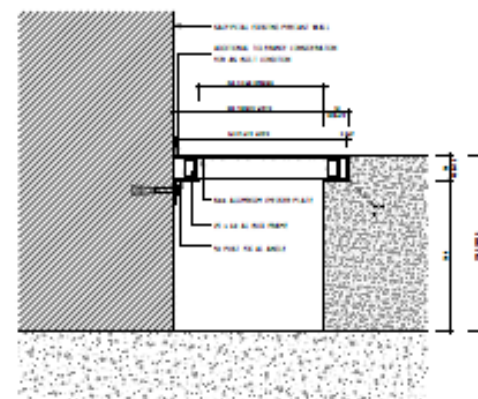




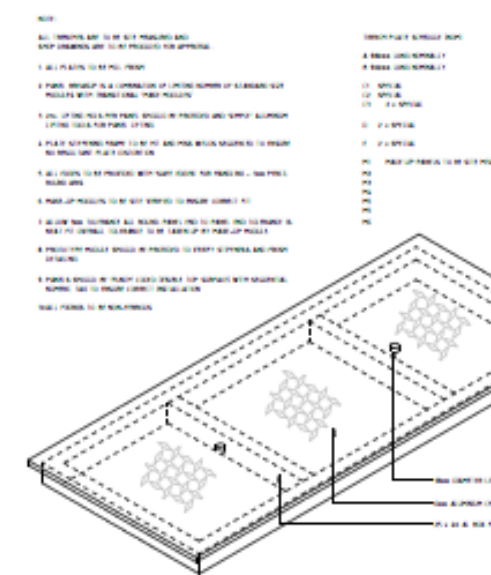
Outdoor Trench Plan



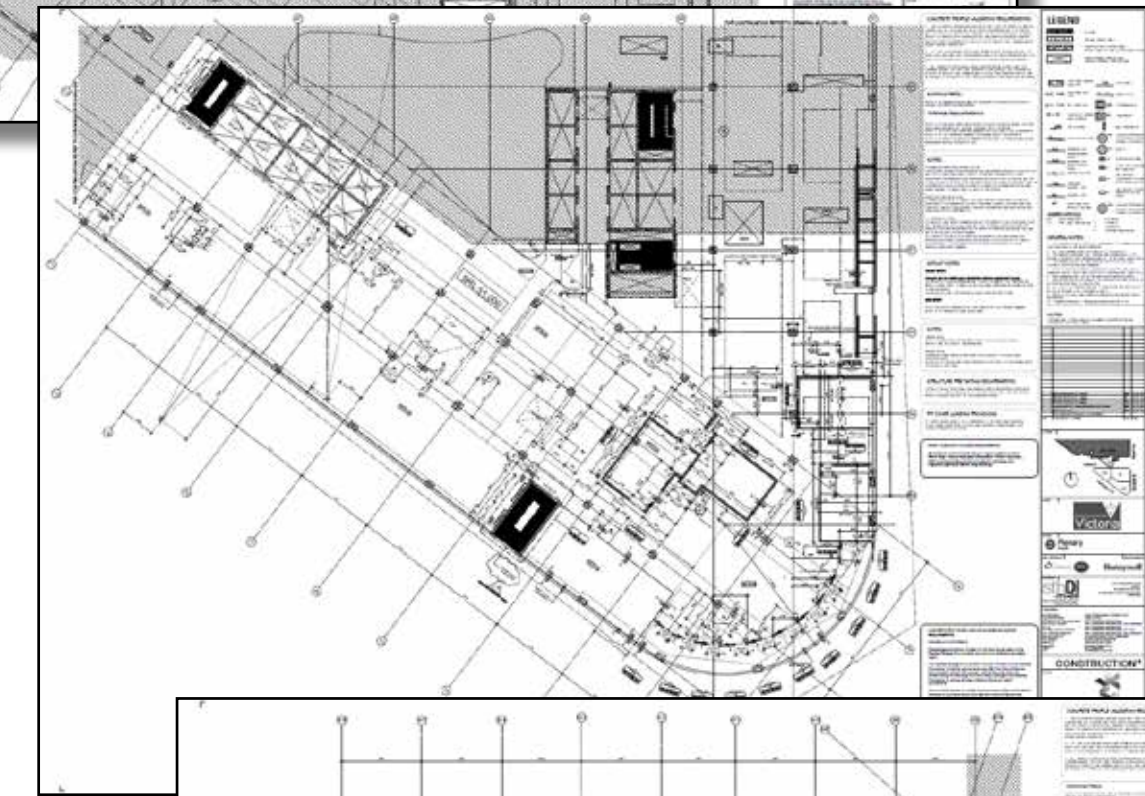
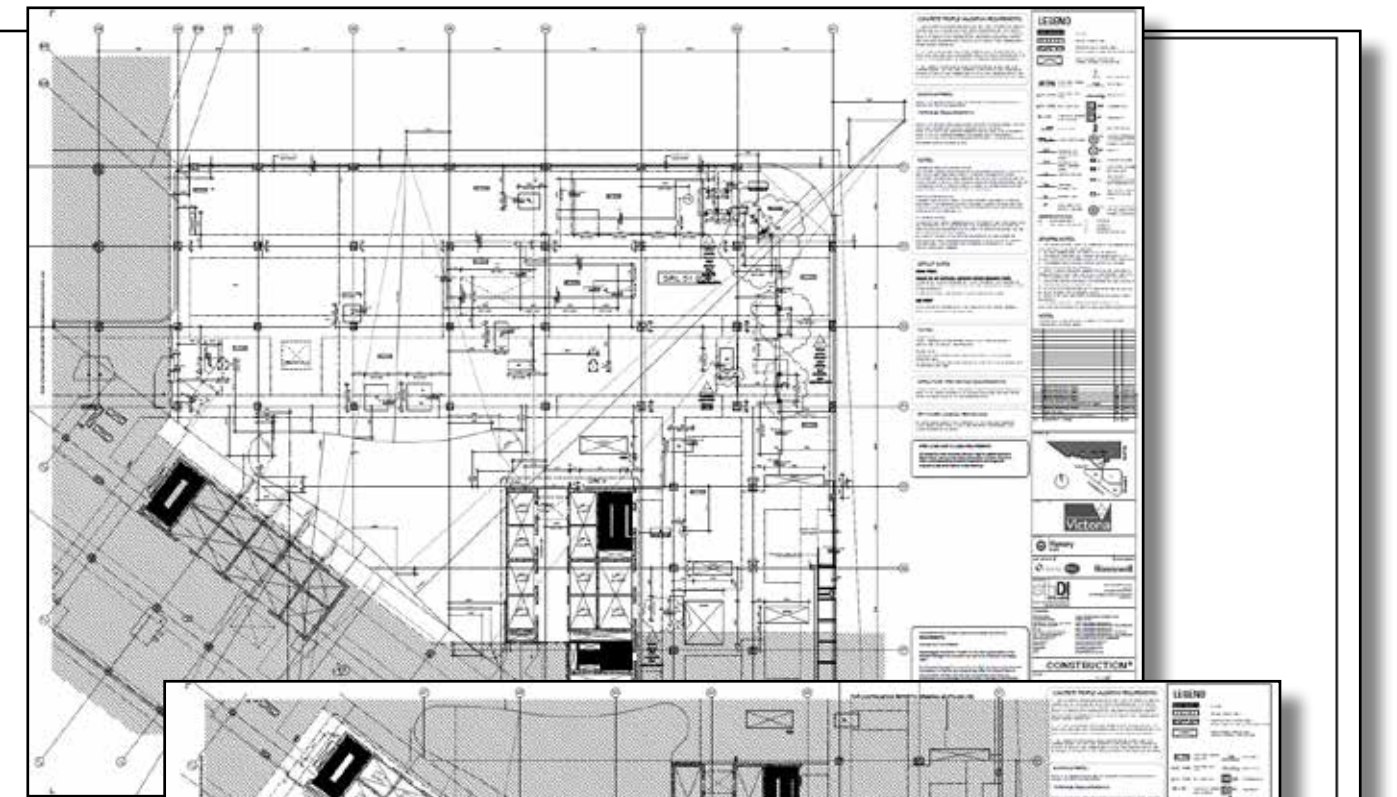
TYPICAL TRENCH DETAIL



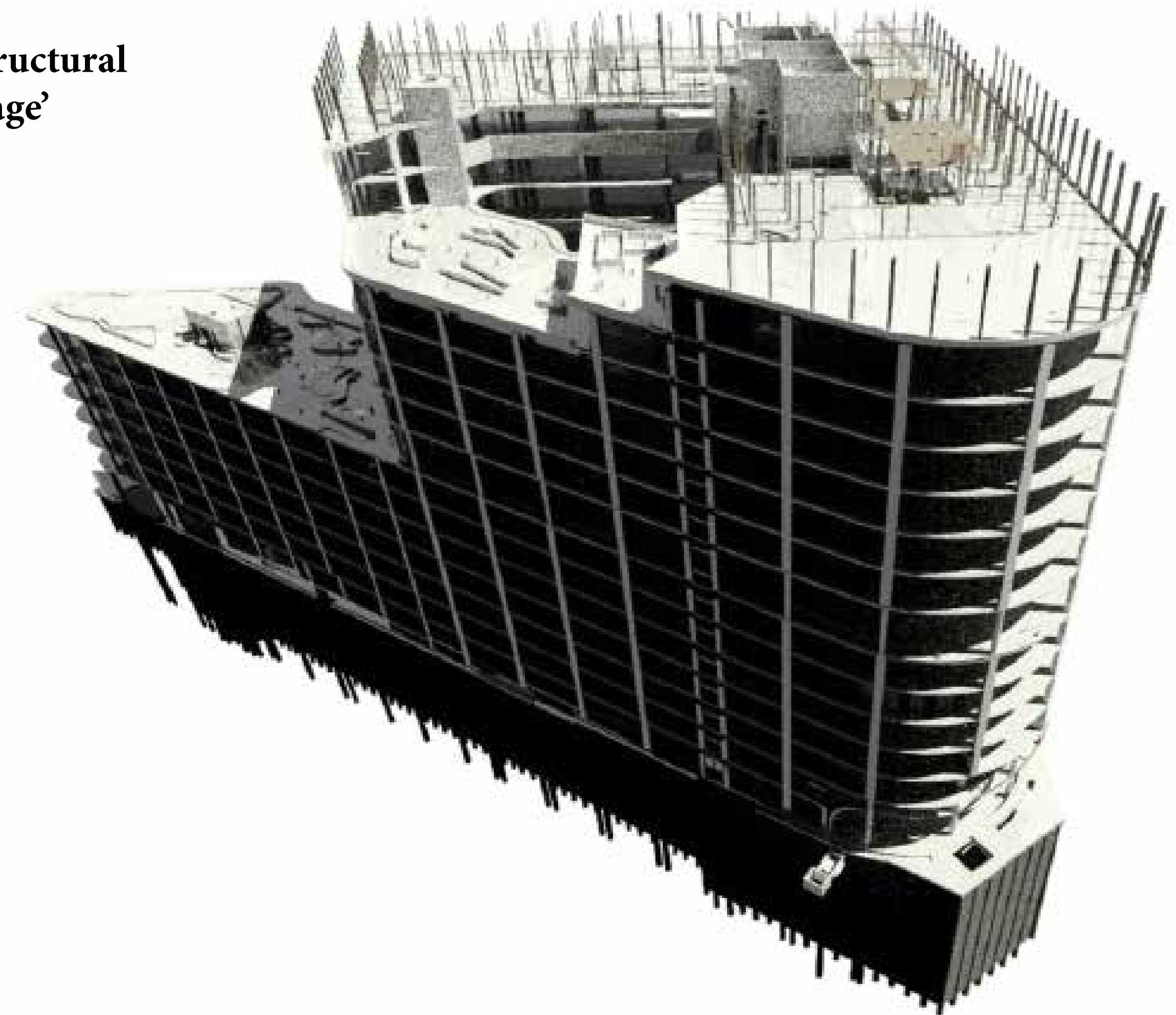
VAULT WALL TRENCH DETAIL



Trench Details



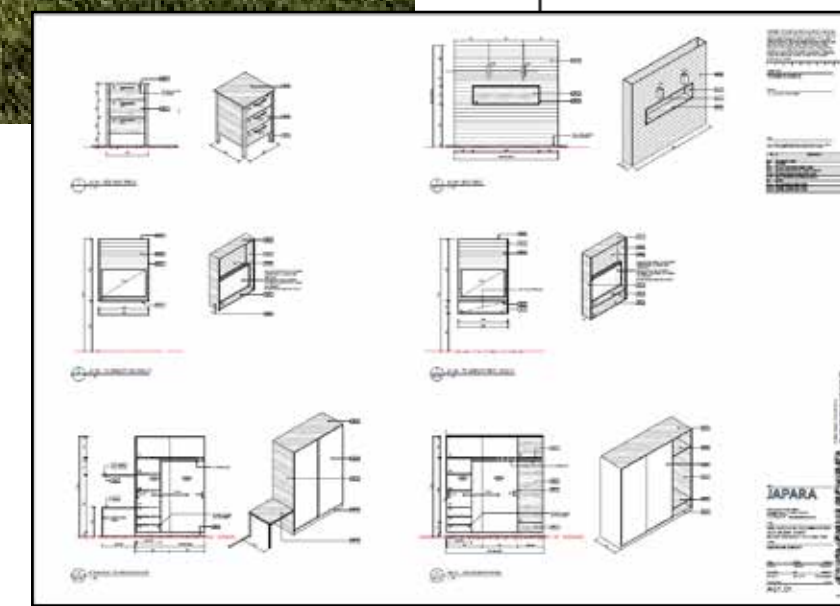
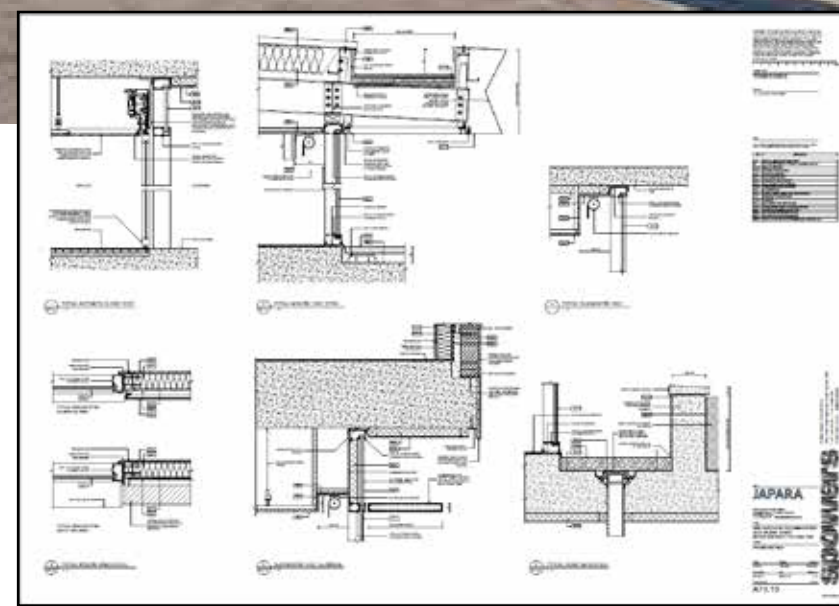
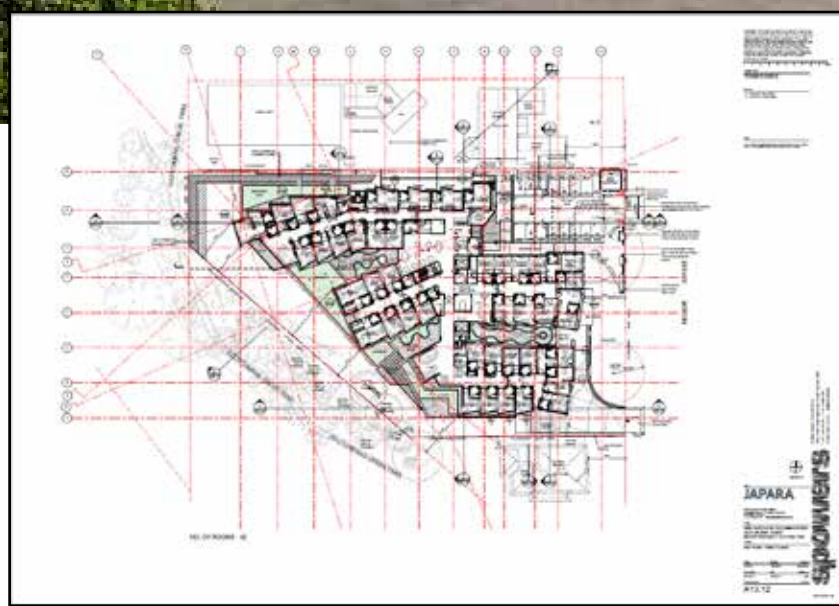
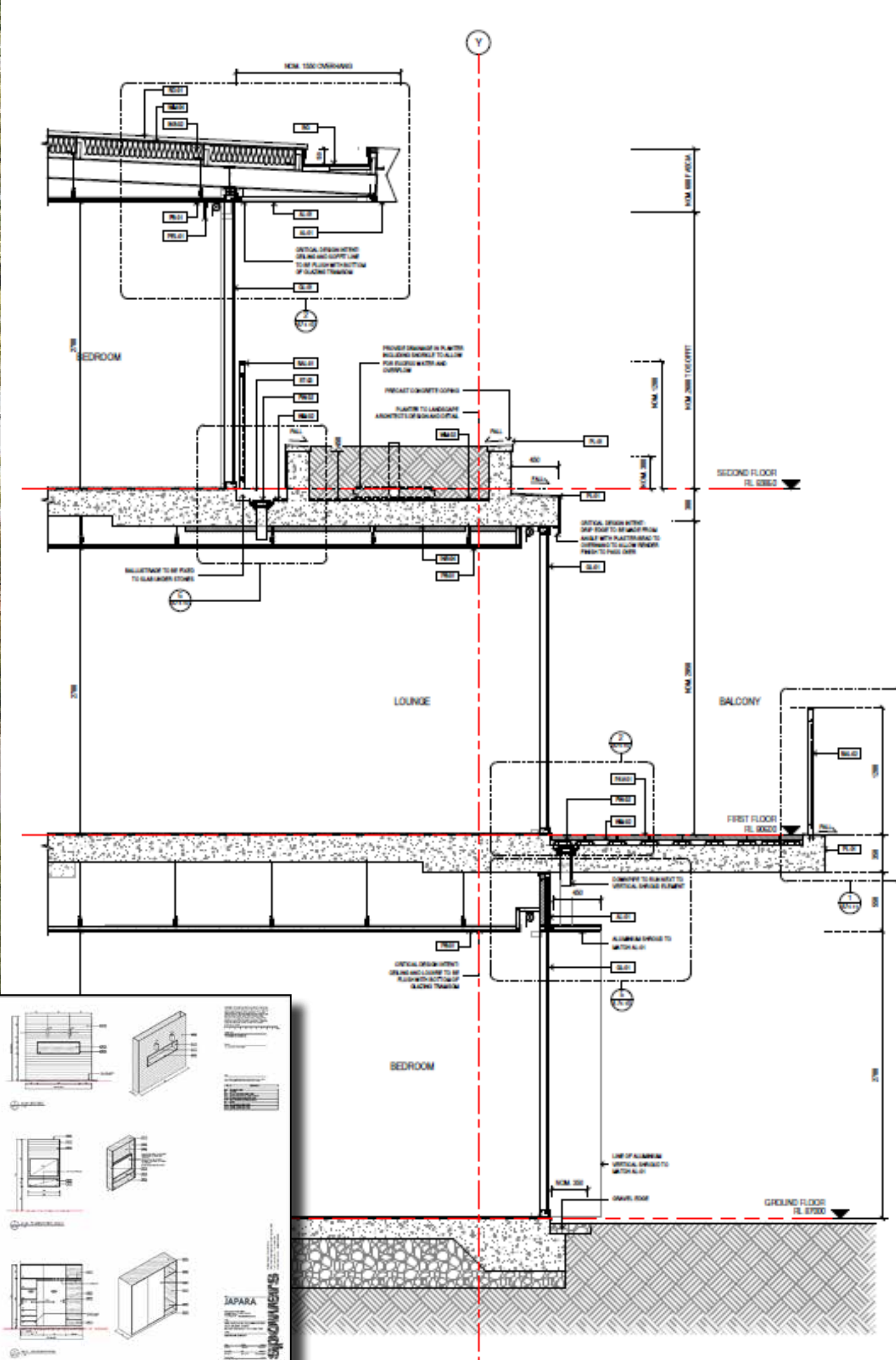
'Architectural-Structural Package'



Japara 'The Regent'

Mount Waverley

spowers

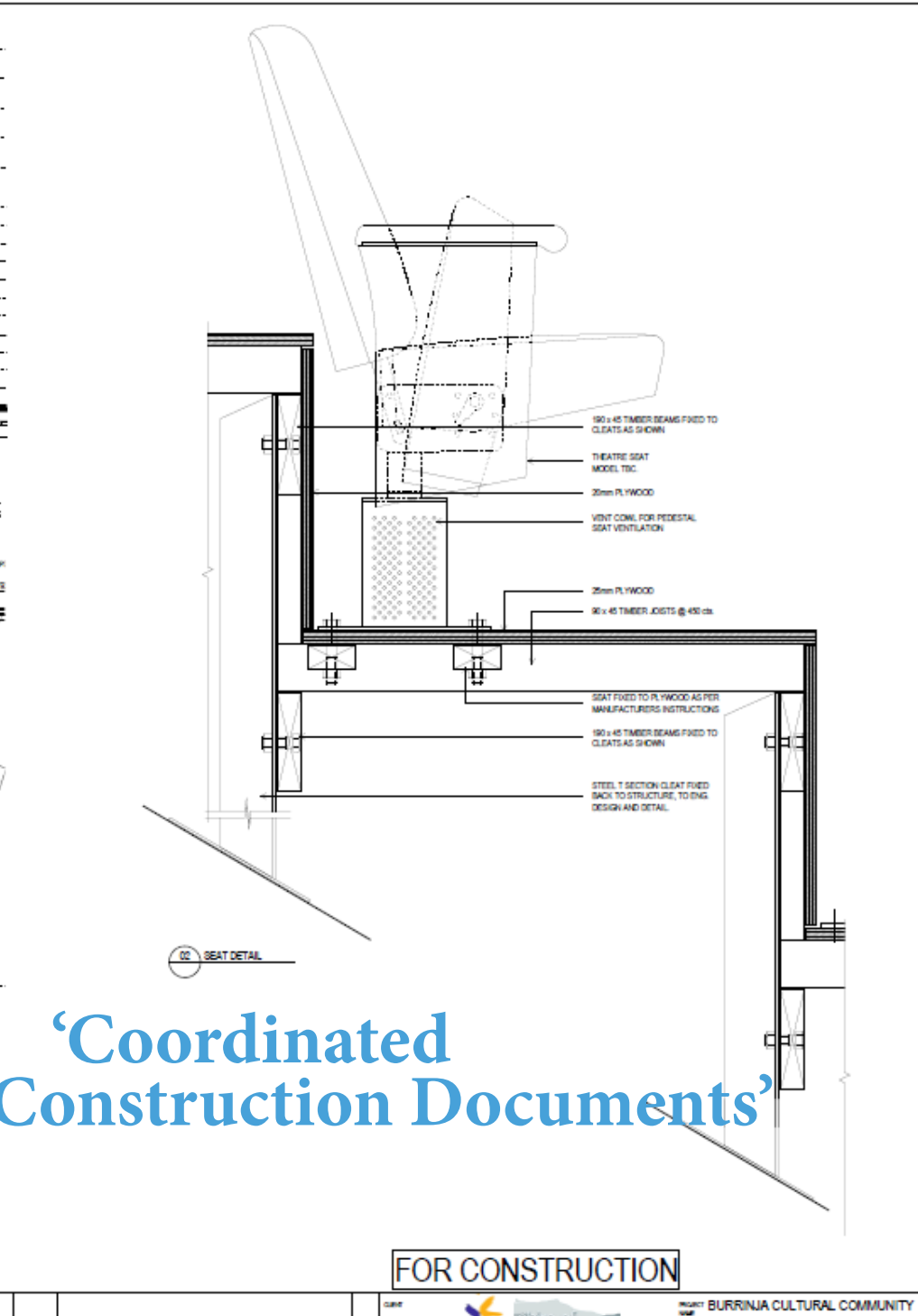
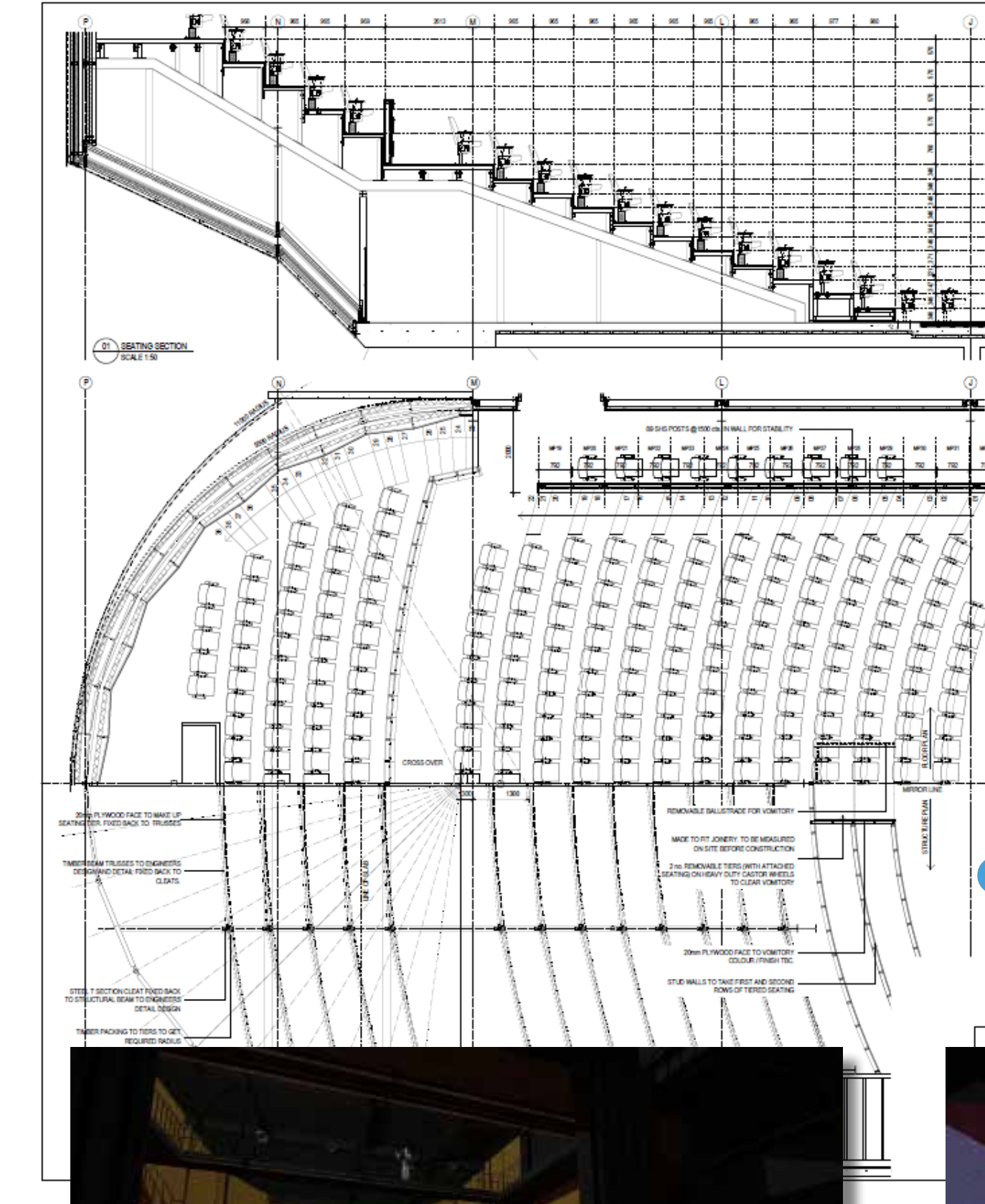
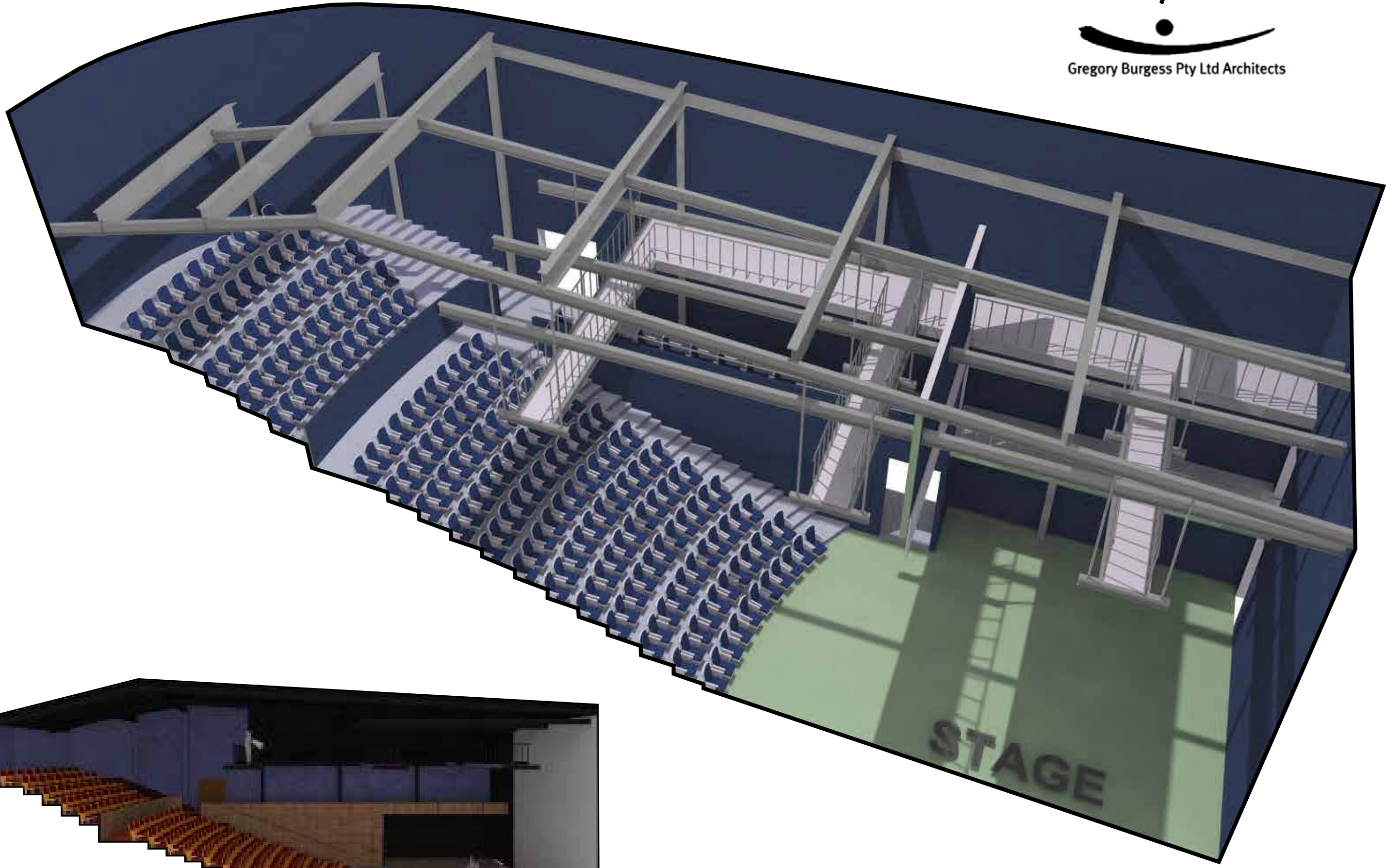


Burrinja

Cultural and Community Centre



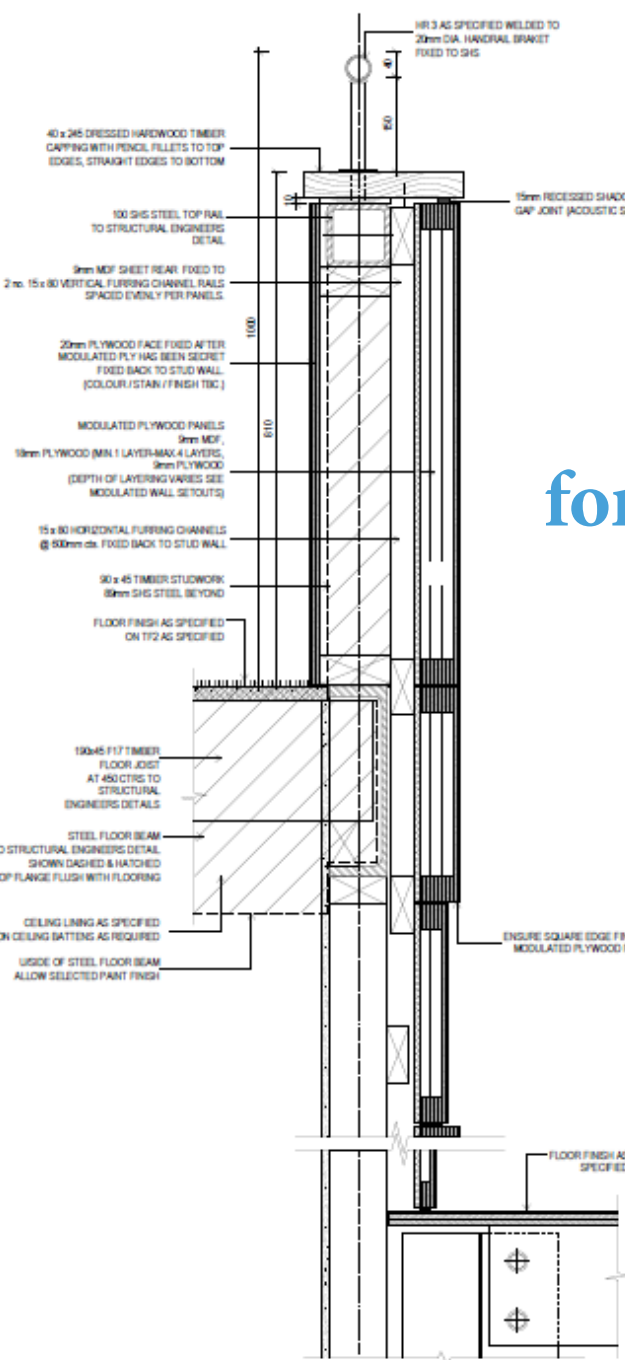
Gregory Burgess Pty Ltd Architects



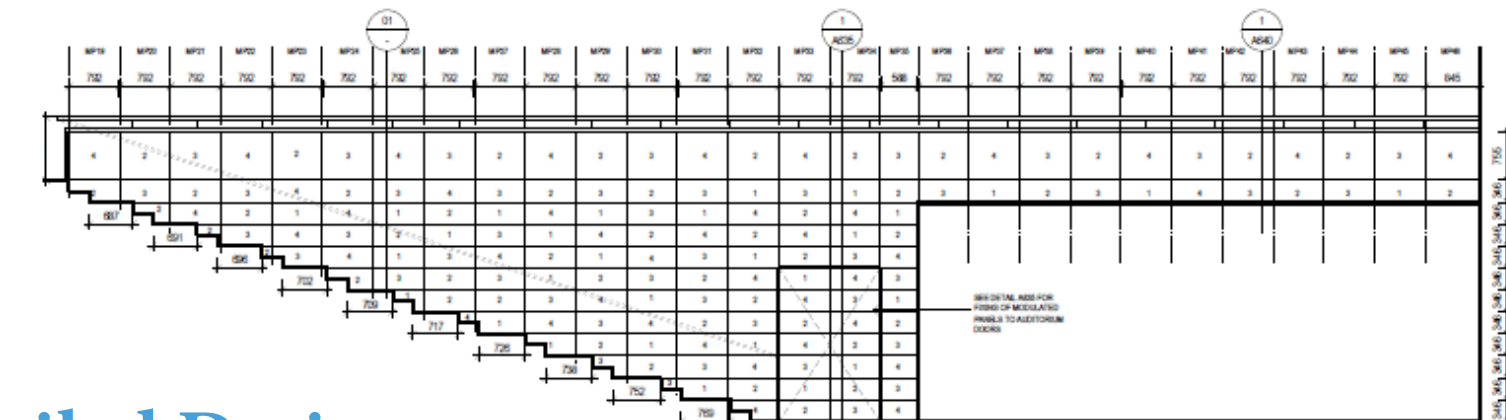
'Coordinated Construction Documents'



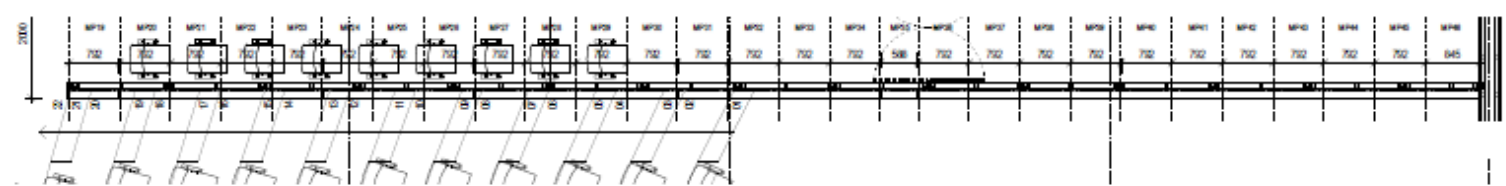
‘Detailed Design for Fabrication and Construction’



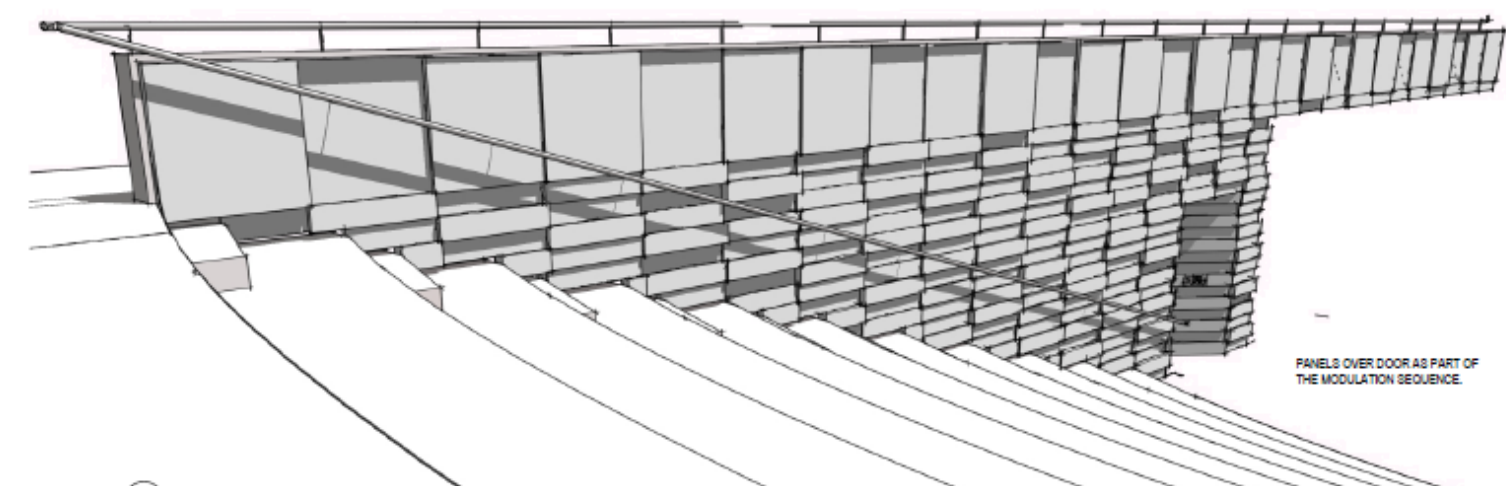
01 MODULATED WALL SECTION SCALE 1:5



02 ELEVATION SCALE 1:50



03 PLAN SCALE 1:50

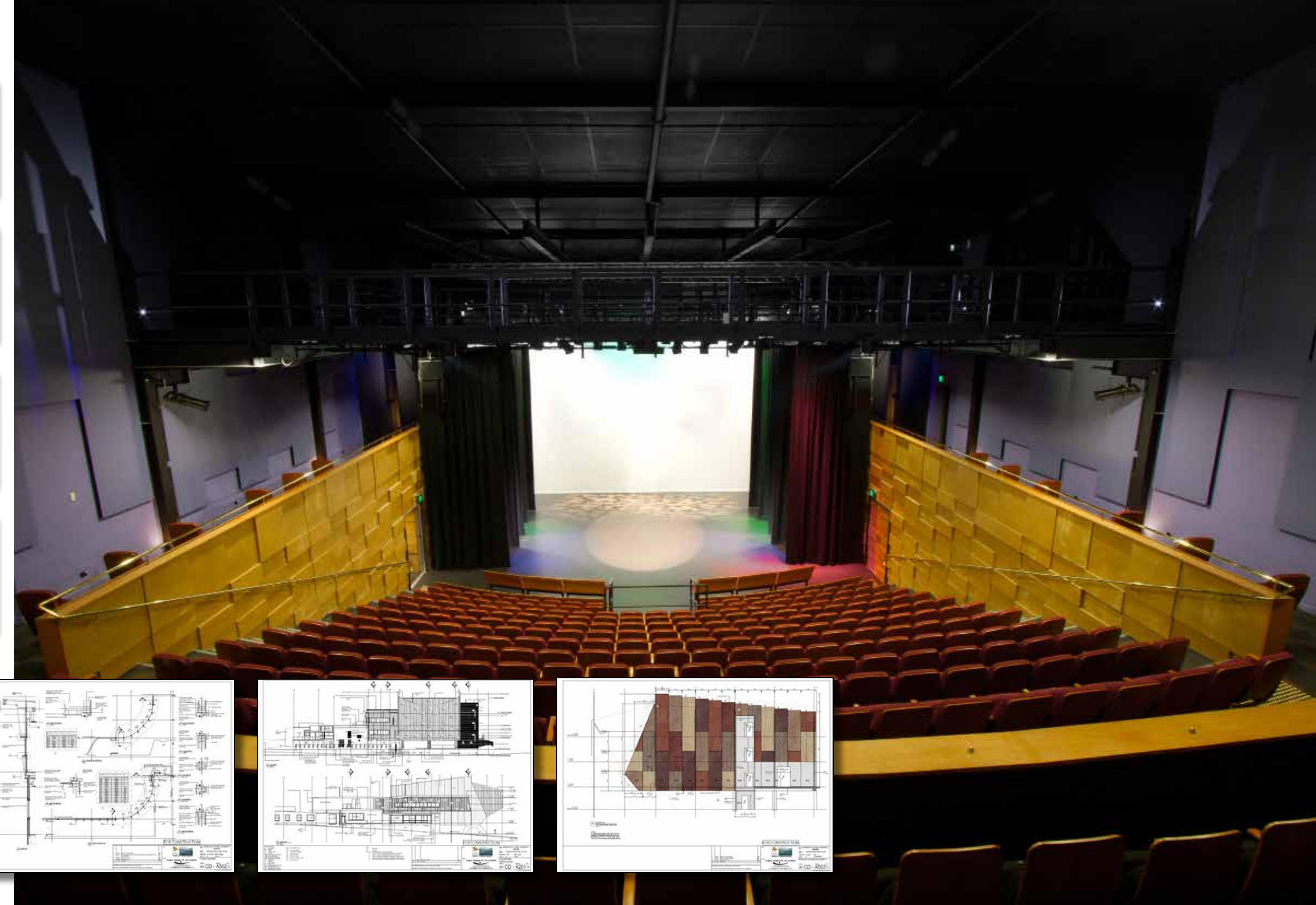
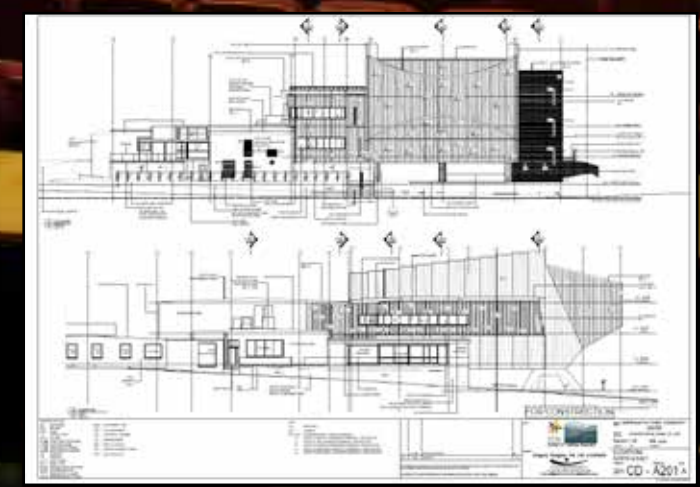
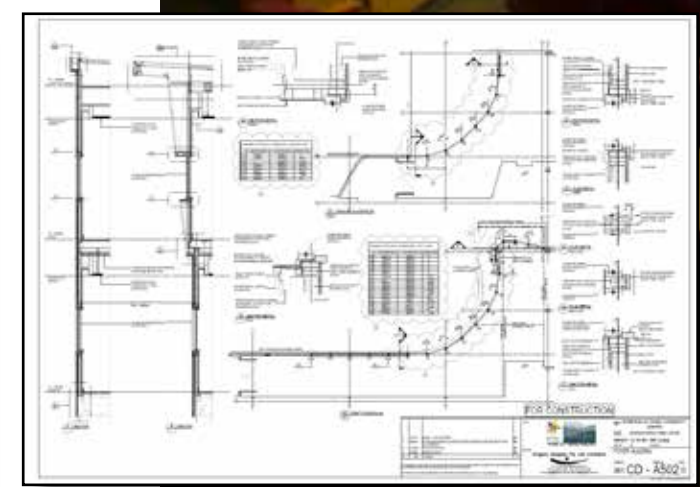
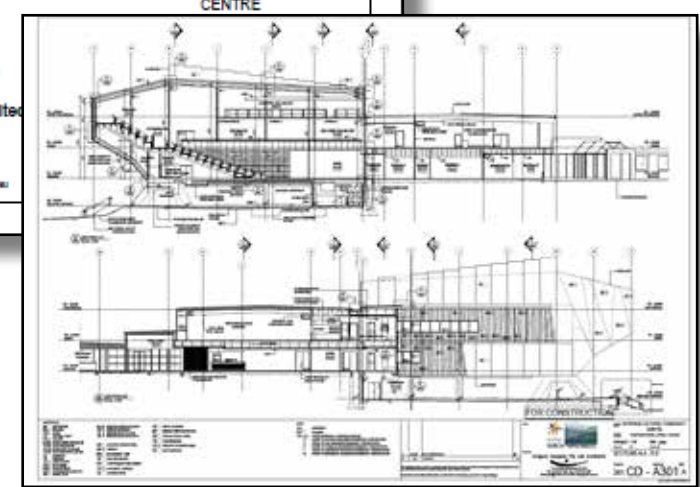
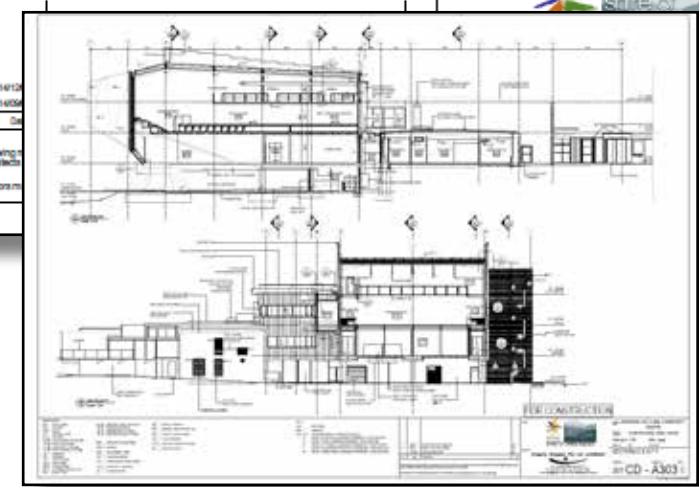
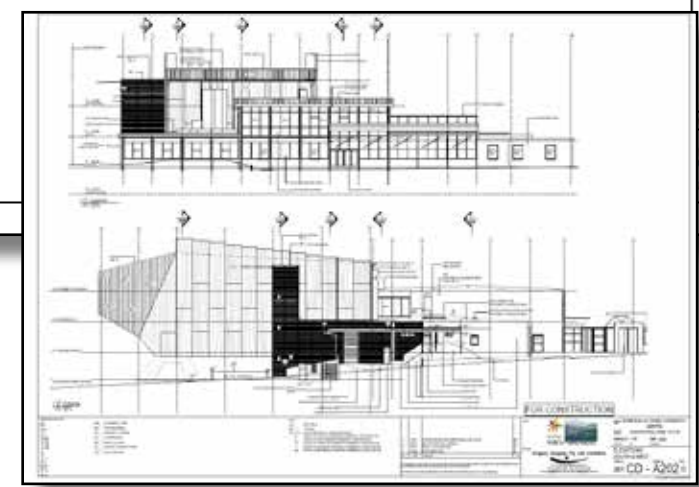
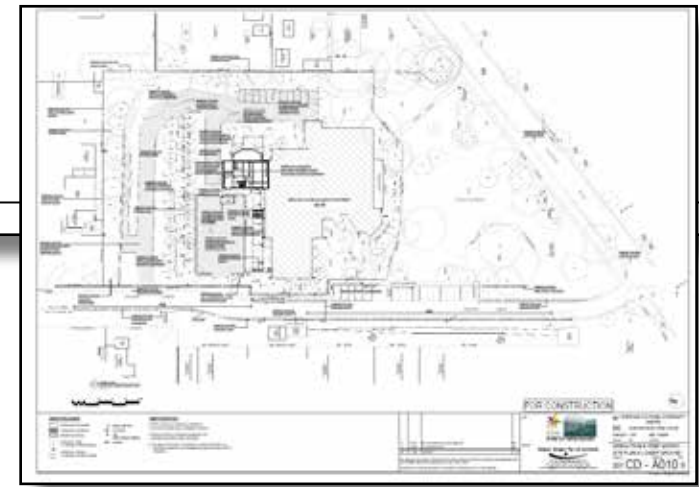


04 3D VIEW OF WALL

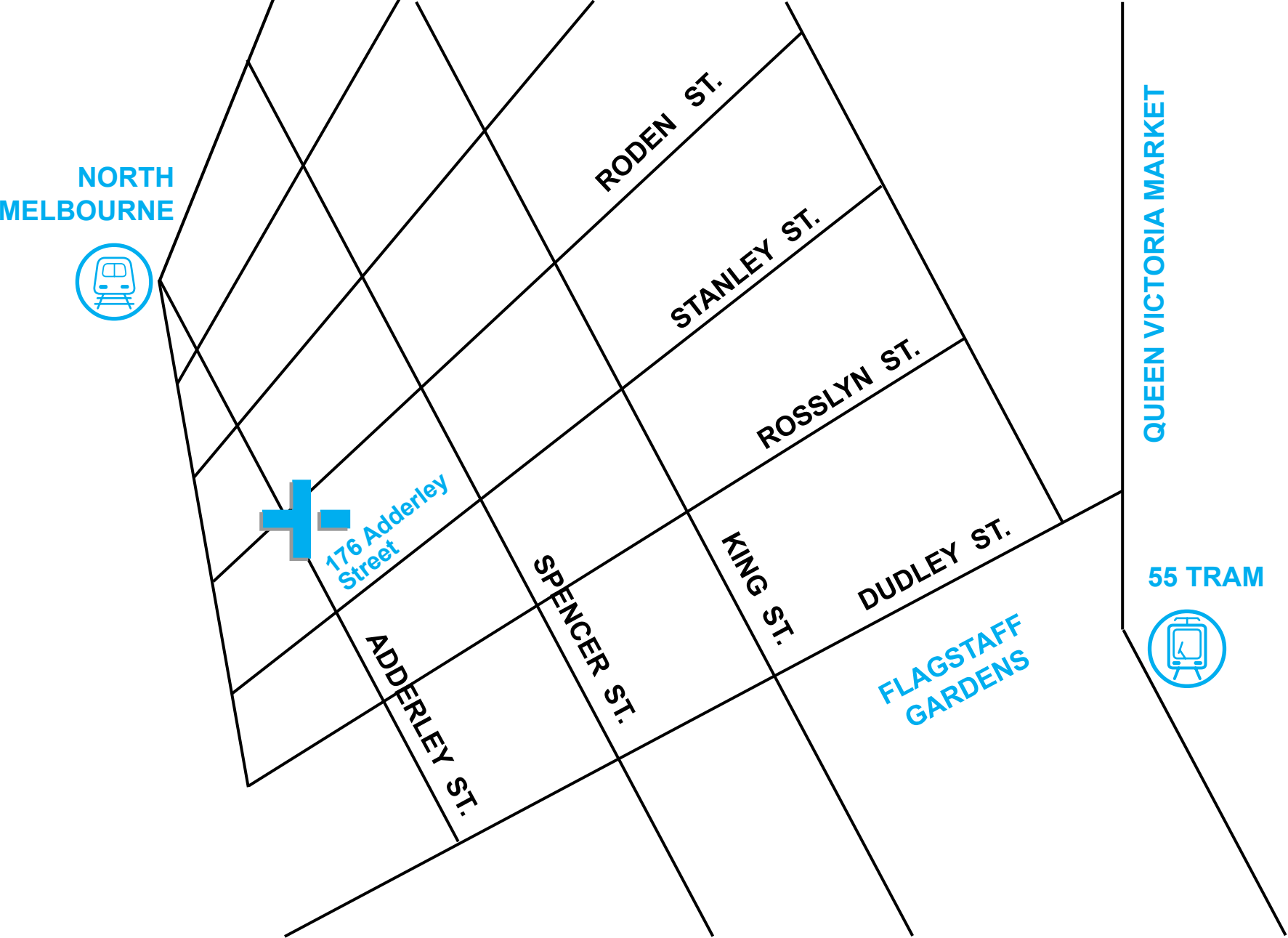
FOR CONSTRUCTION



BURRINJA CULTURAL COMMUNITY CENTRE



Contact Information



address **trinity+one**
176 Adderley Street
West Melbourne
VIC 3003
Australia

phone **+61 (0) 404346602**

e-mail **info@trinityplusone.com.au**