



trinity  one

**design  
documentation  
consultation**

‘Delivering high quality design  
through high end documentation’

Page DisplayOverview

Before you get started on this document its best to note that it is designed to be printed at A3 and viewed as a double spread. what this meas essentially is its a magazine format.

The following are a culmination of works by the staff of trinity+one for a variety of architectural practises over a period of 15 years.

Some of the works were carried out as part of large teams and some solely by trinity+one staff. The work does however reflect the capacity and high skill level of trinity+one staff in both producing managing and executing architectural documentation.

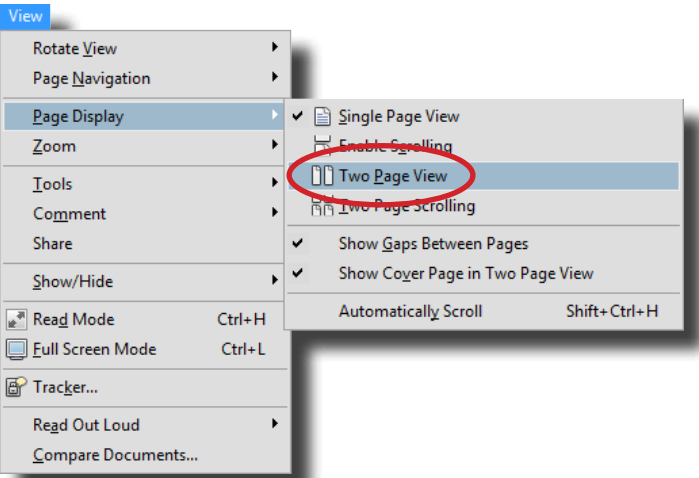
Its important to recognise that the works are owned and copyright to the respective architectural practise.

For any clarification in regards to the projects, please feel free to contact us.

So if your reading this on your screen in .pdf format you may want to click the following setting to make viewing that little bit better.

includes works for:

- John Wardle Architects
- Denton Corker Marshall
- Silver Thomas Hanly / Design Inc
- Cox Architecture
- ARM
- Fender Katsalidis Architects
- Gregory Burgess Architects
- Spowers
- Judd Lysenko Marshall
- Paul Gardiner Architects
- BPTW Partnership
- Reddy Architecture
- OBK Architects and Planners
- Inhabit Design
- PEK
- Paul Hickman Design
- Adrian Amore Architects
- trinity+one









Facade Closed

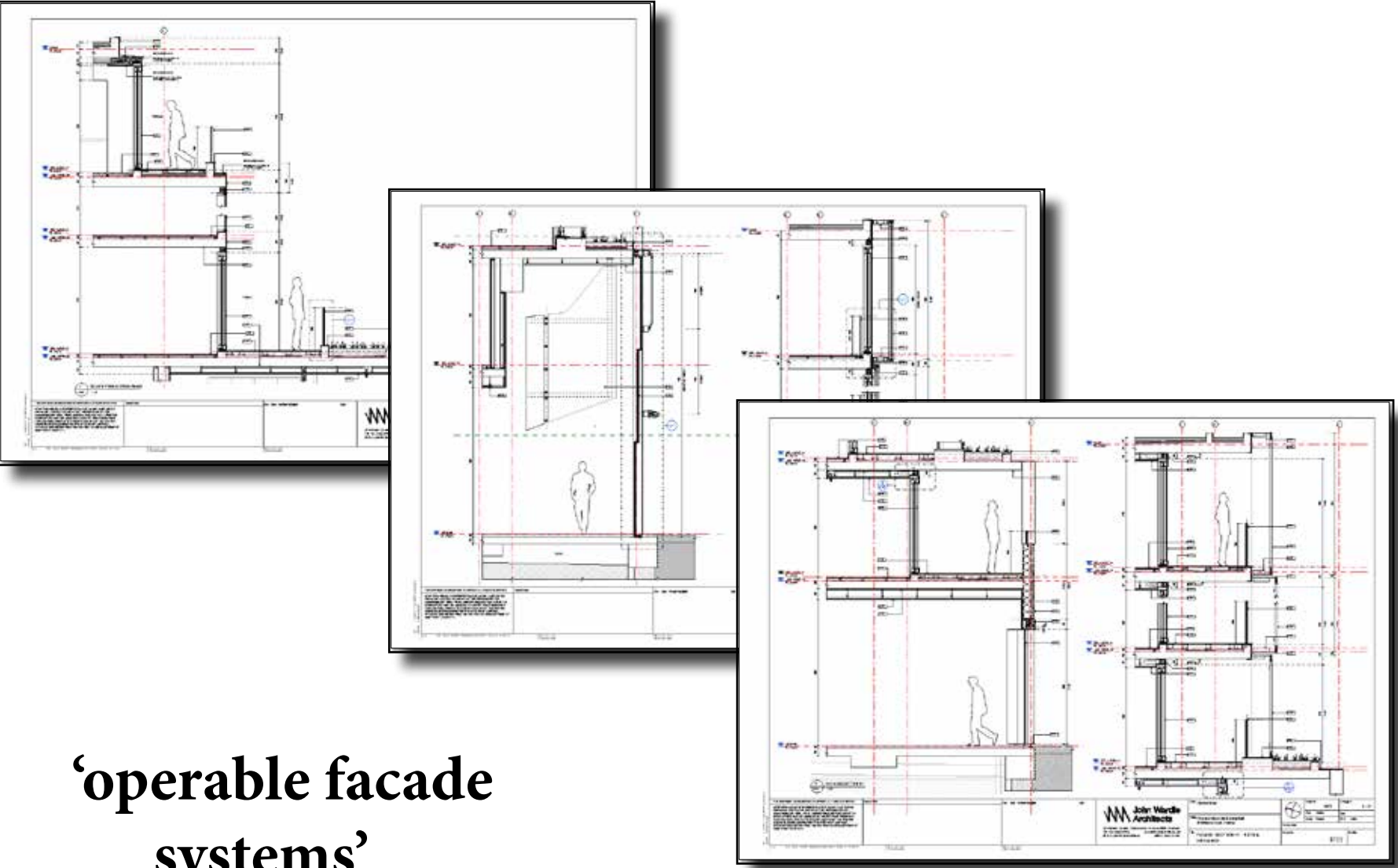
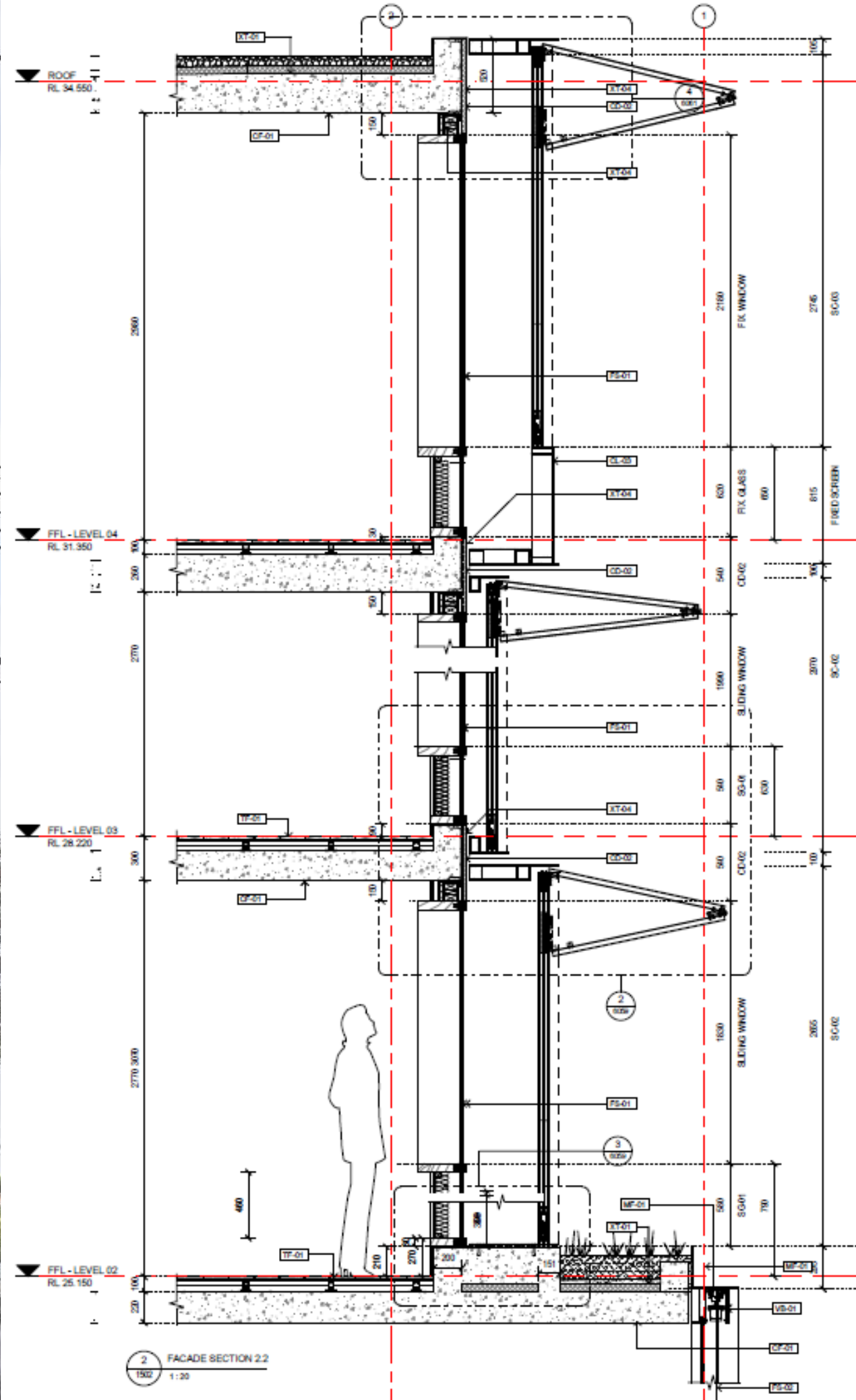


Facade Open

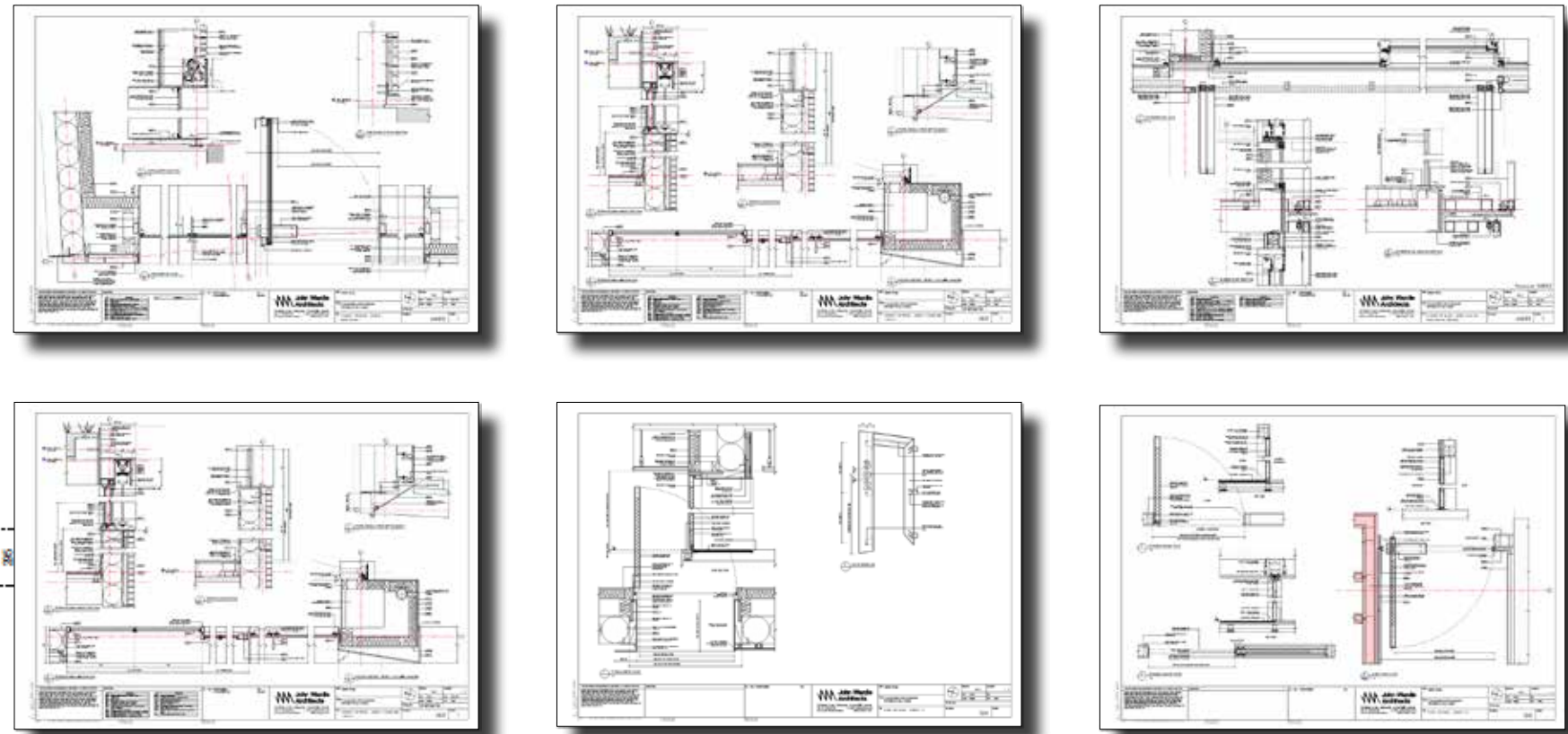
# Malvern Road Apartments

## Luxury Apartments

John Wardle Architects



‘operable facade systems’





# Toorak Park

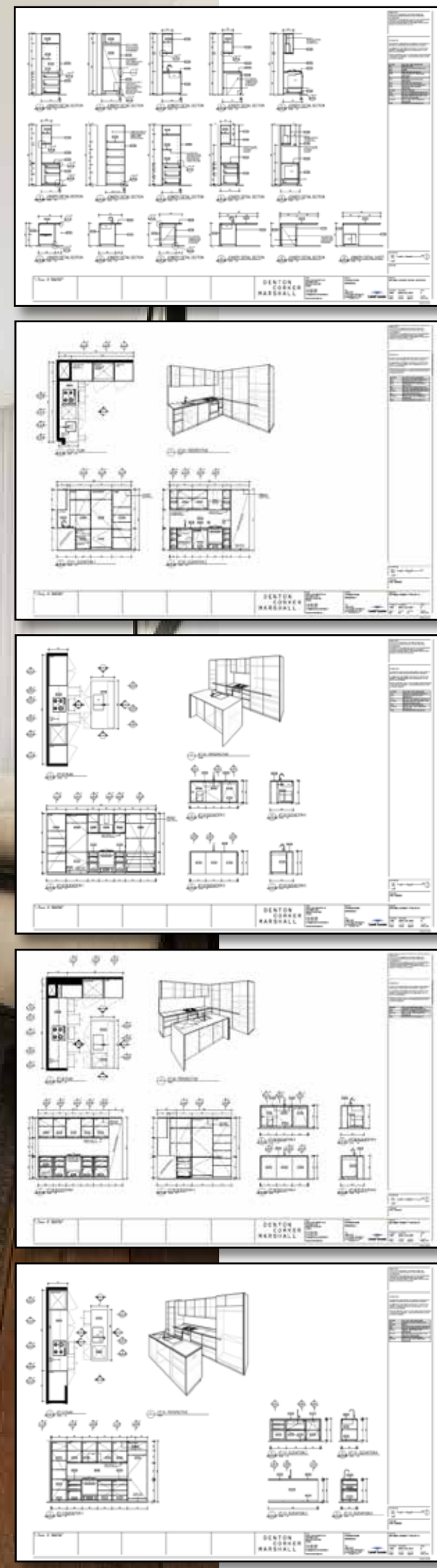
## Luxury Apartment Precincts

DENTON  
CORKER  
MARSHALL

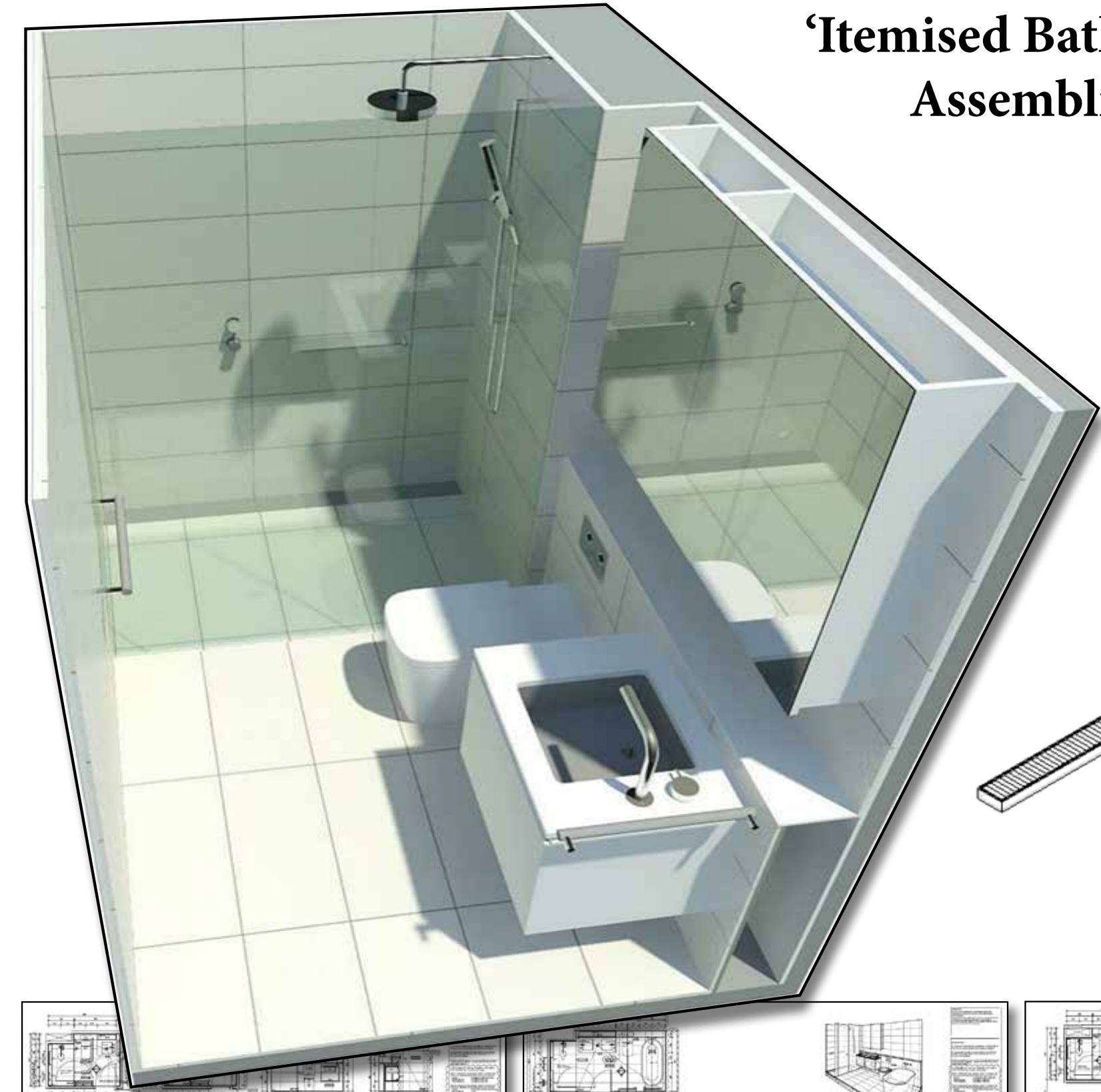
'Fully Documented  
Fit Outs'



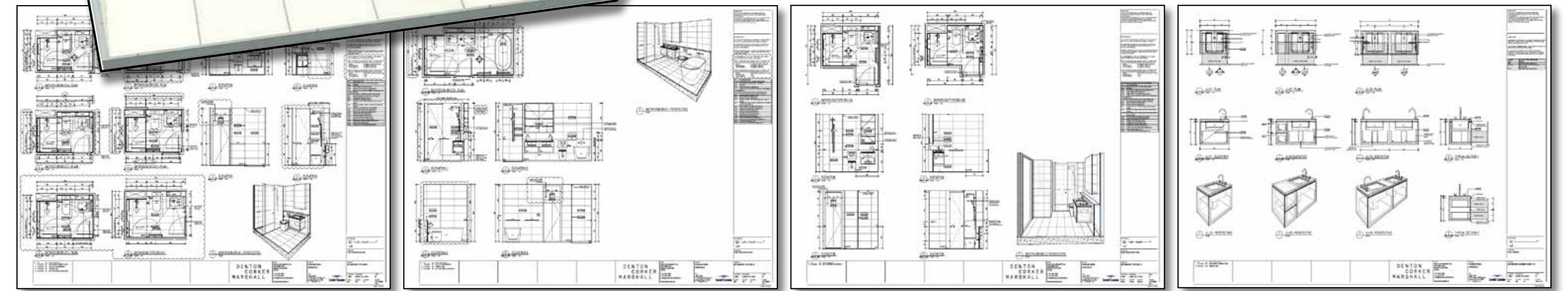
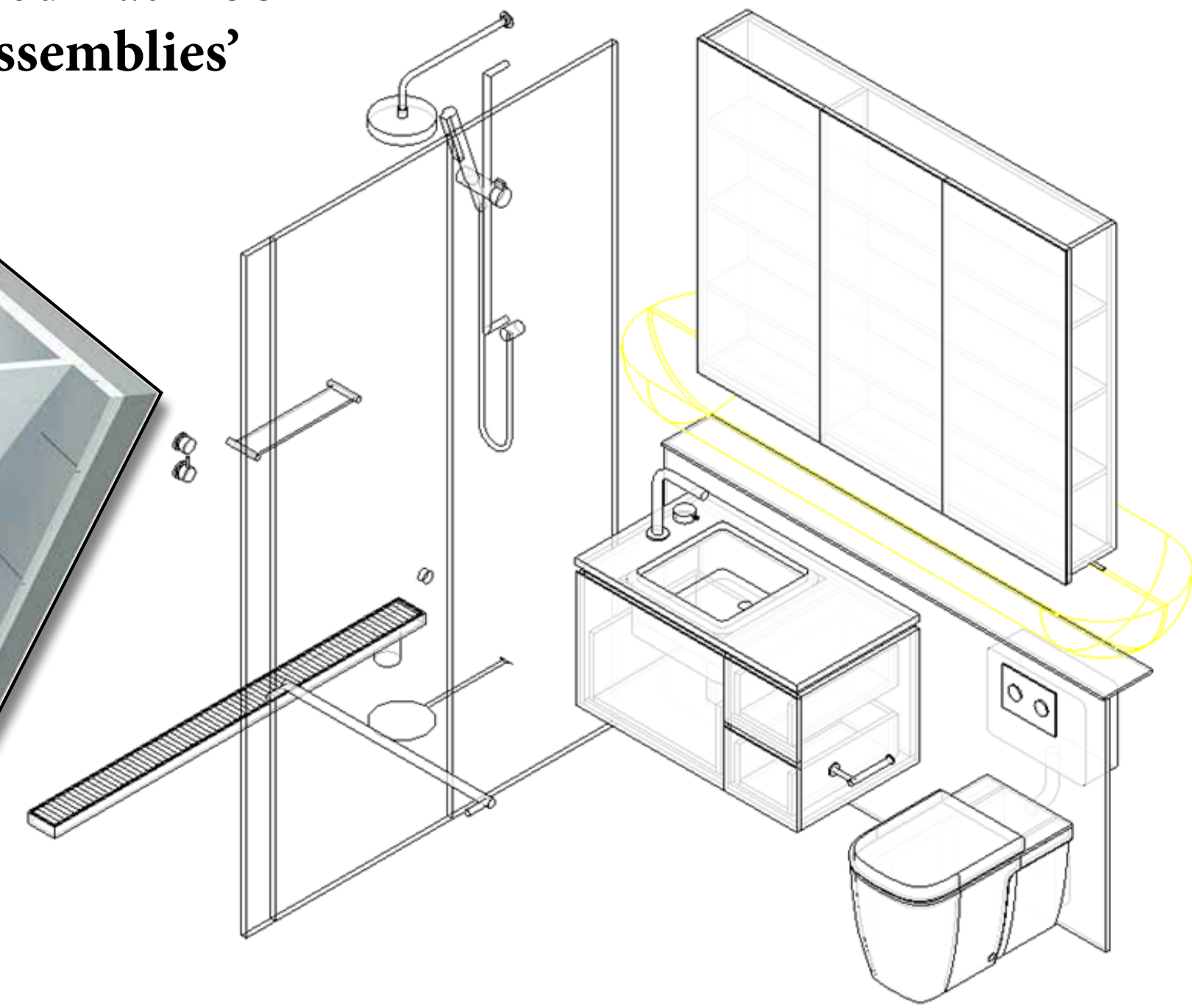




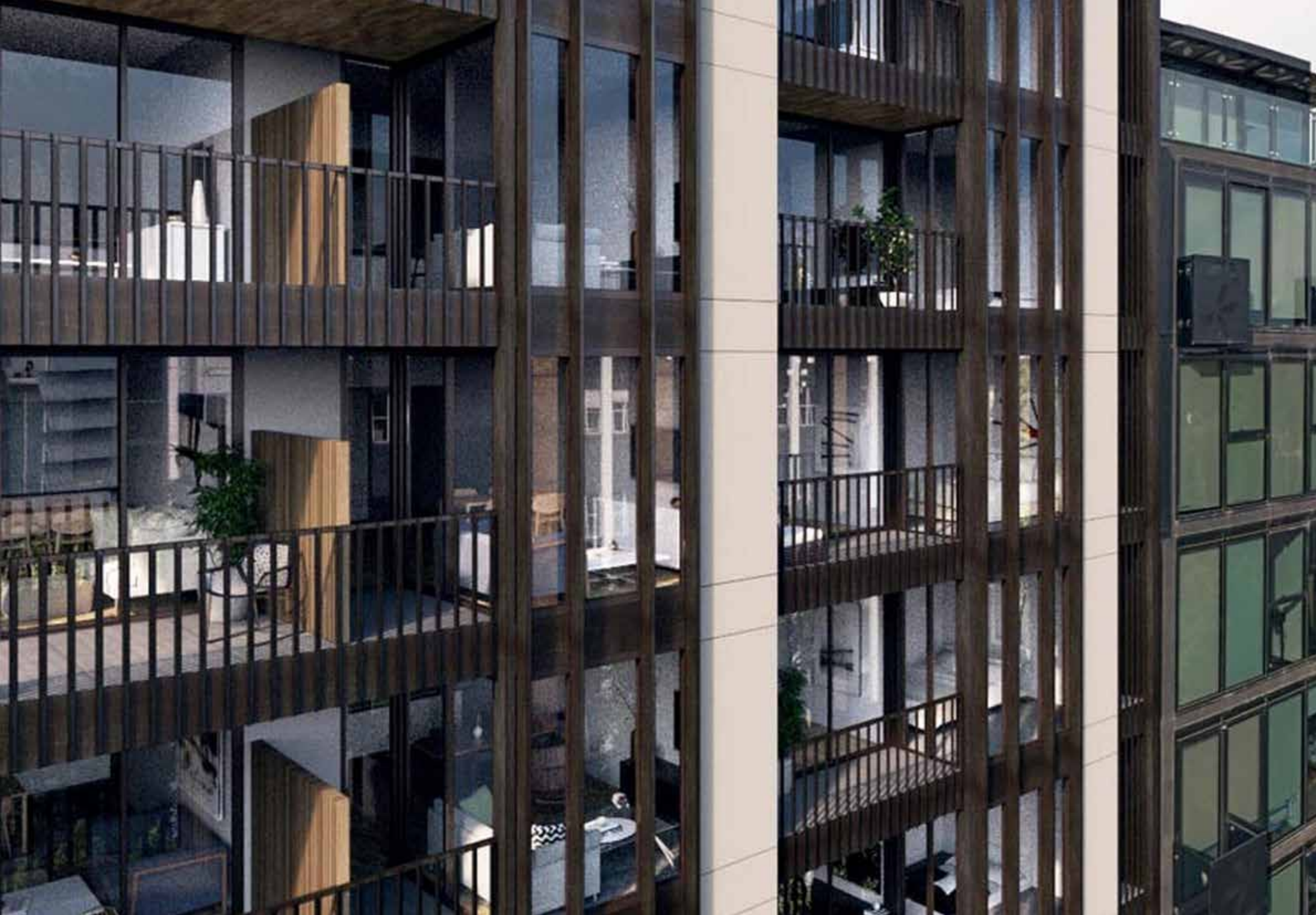
**‘Detailed Kitchen Assemblies’**



**‘Itemised Bathroom Assemblies’**



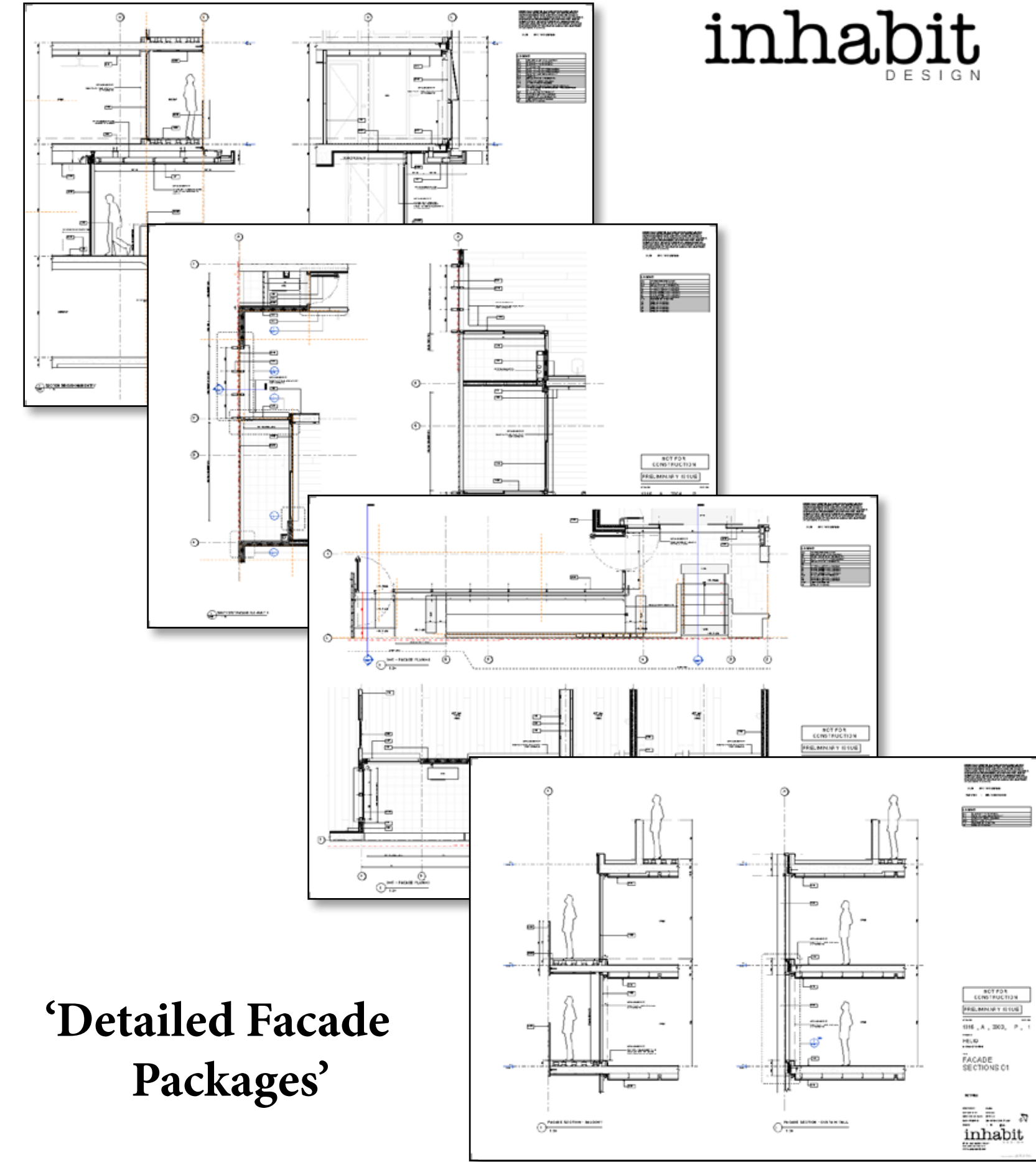
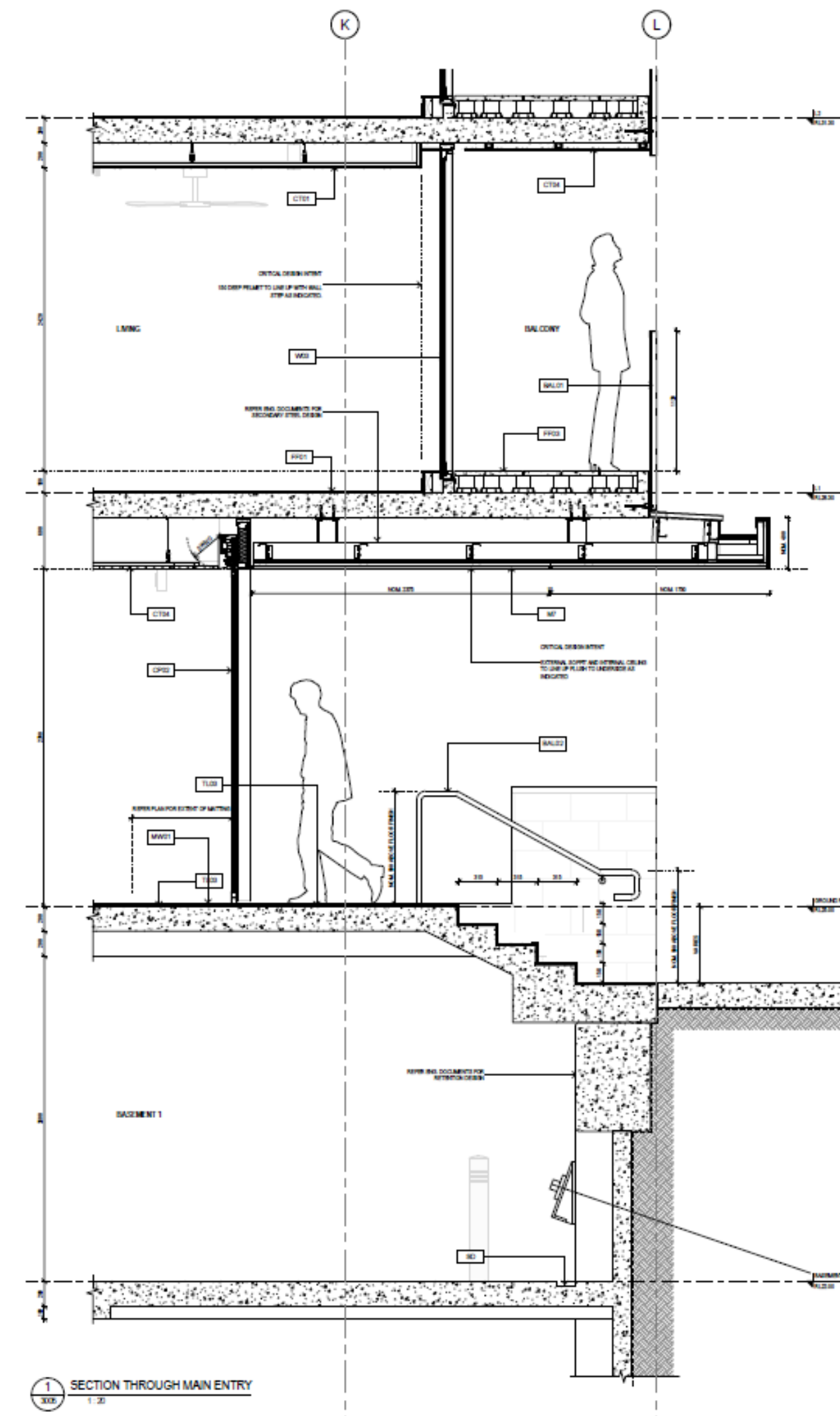




# Helio

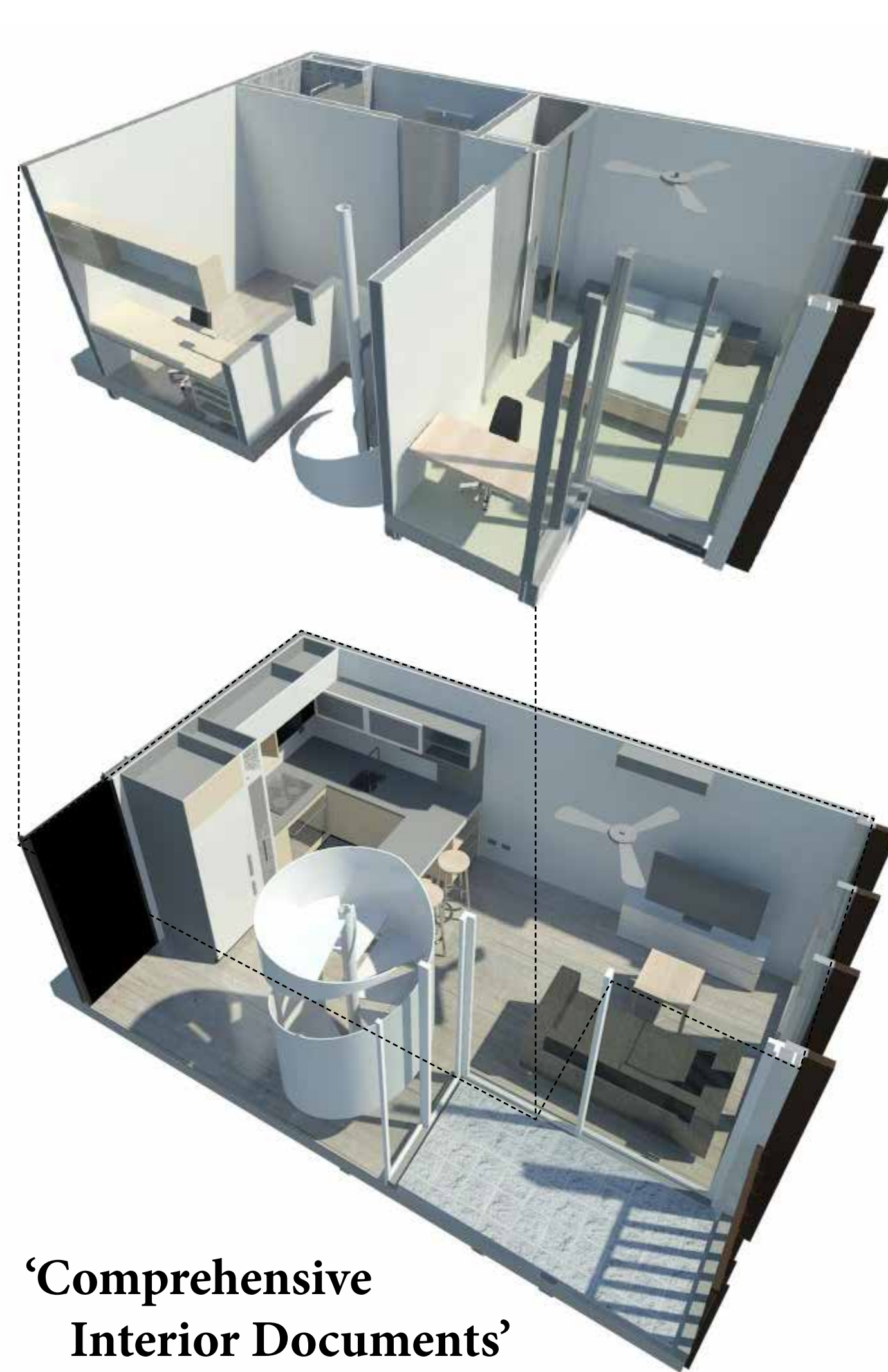
## Multi-Residential Development

inhabit  
DESIGN

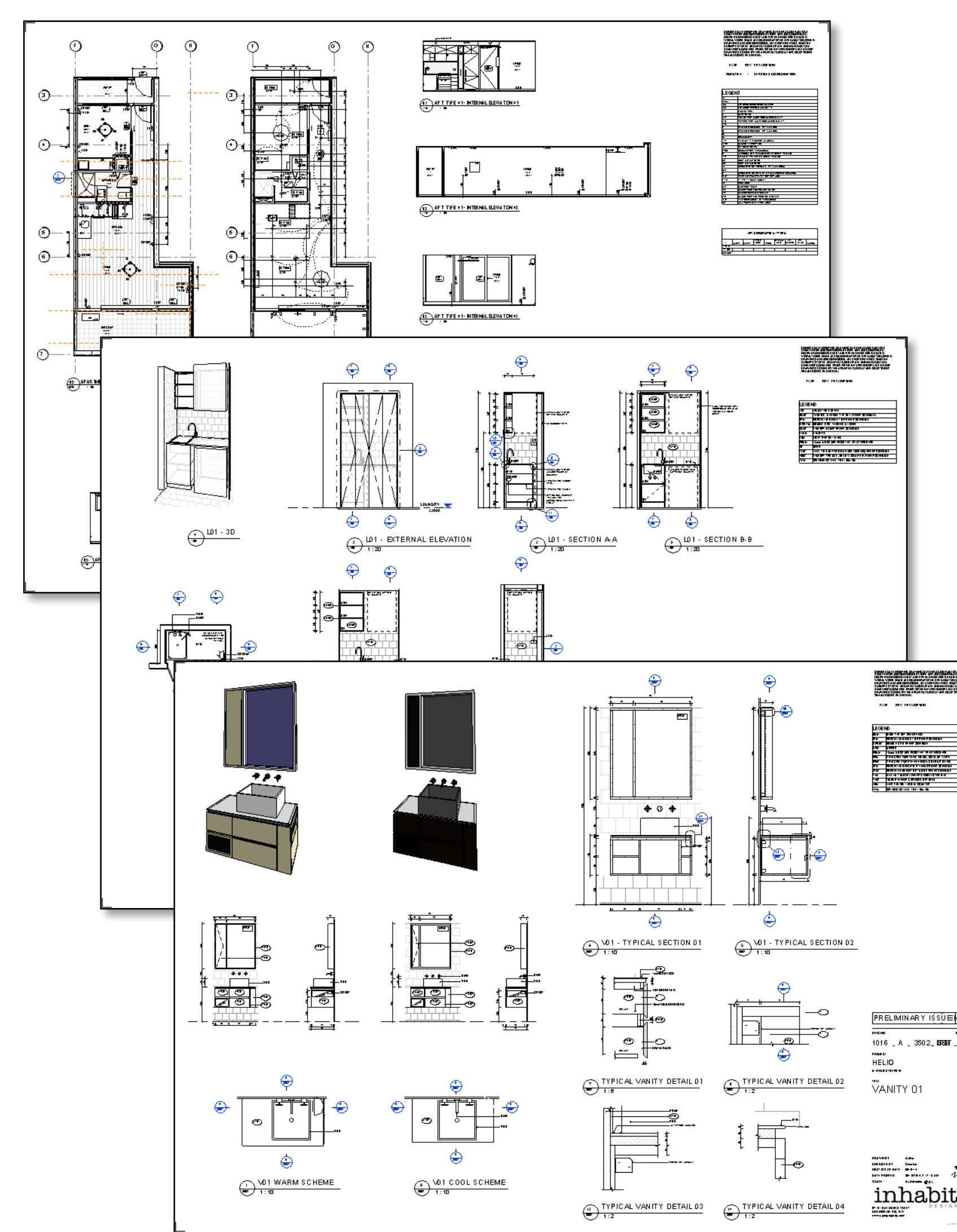


‘Detailed Facade Packages’





**'Comprehensive Interior Documents'**

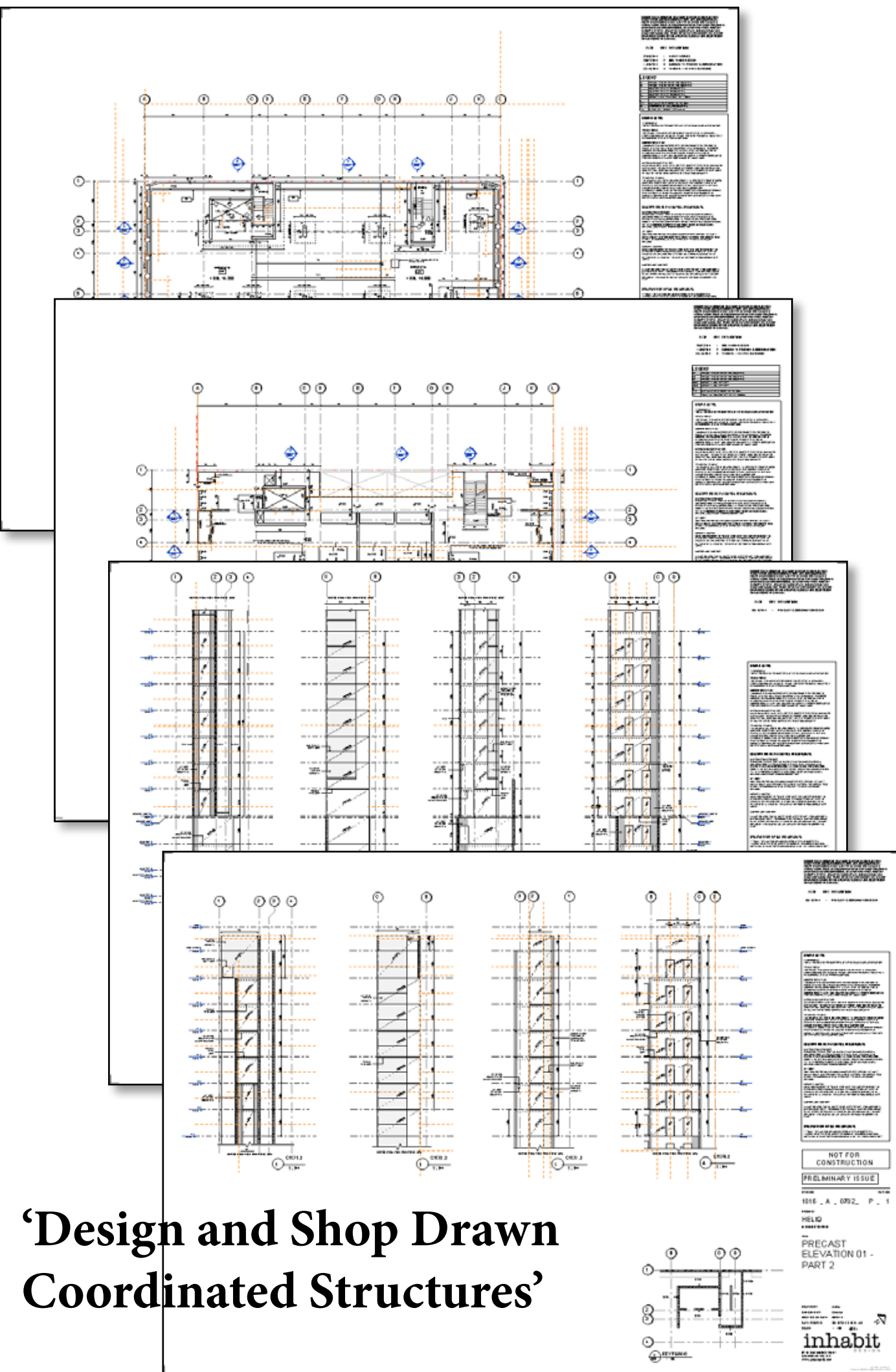


**'Pre-fabricated Bathrooms'**

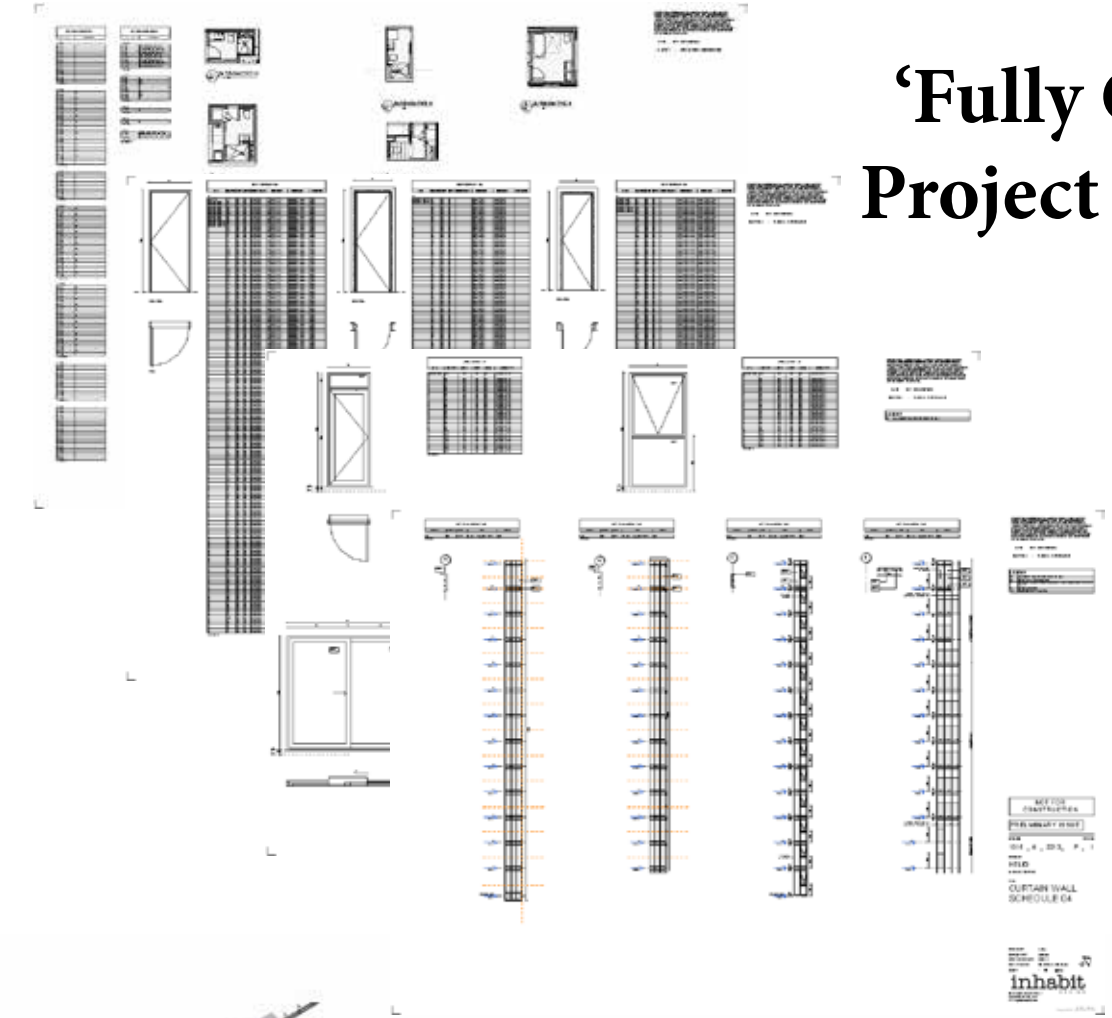




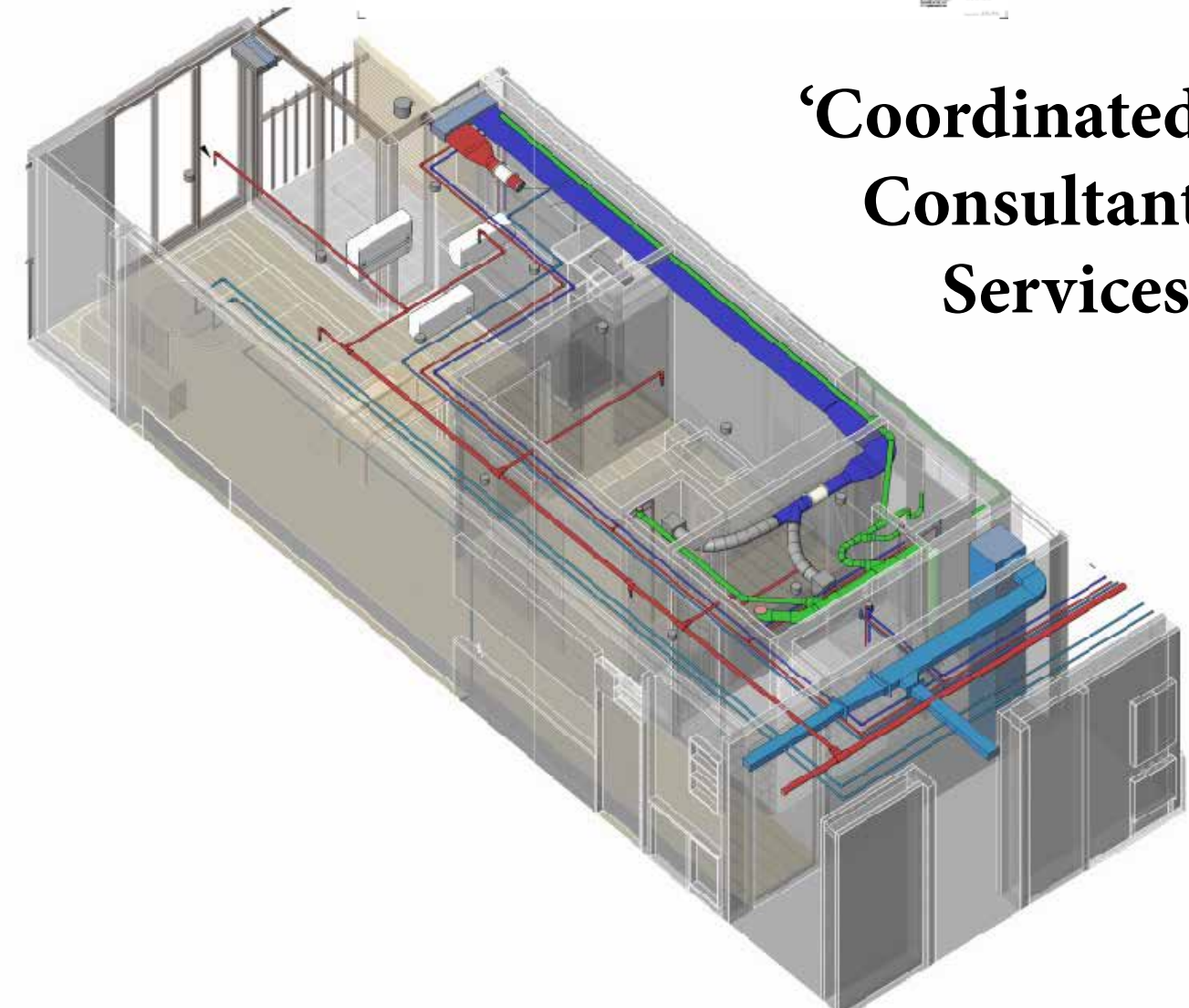
**‘Design and Shop Drawn Coordinated Structures’**



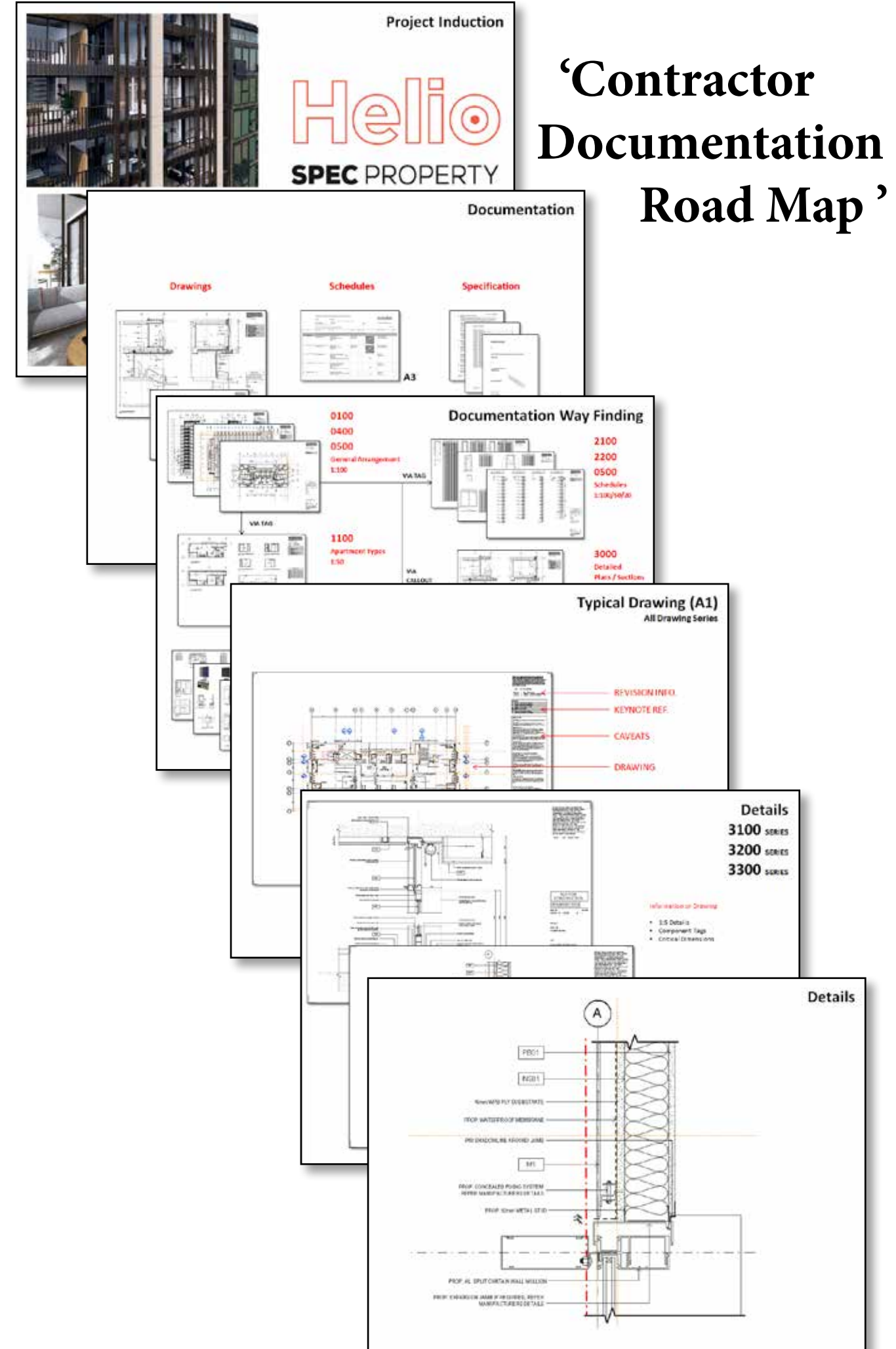
**‘Fully Coordinated Project Schedules’**



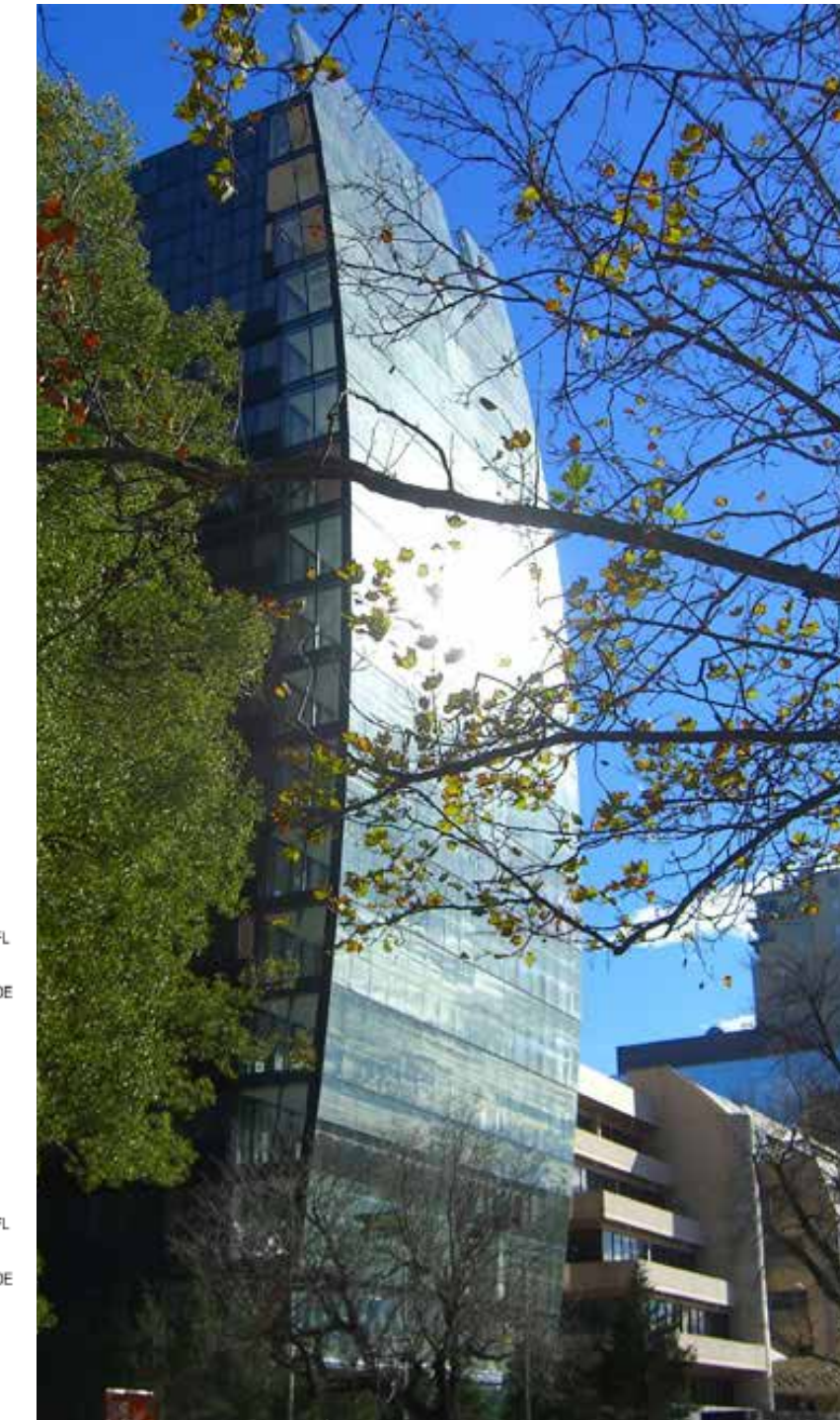
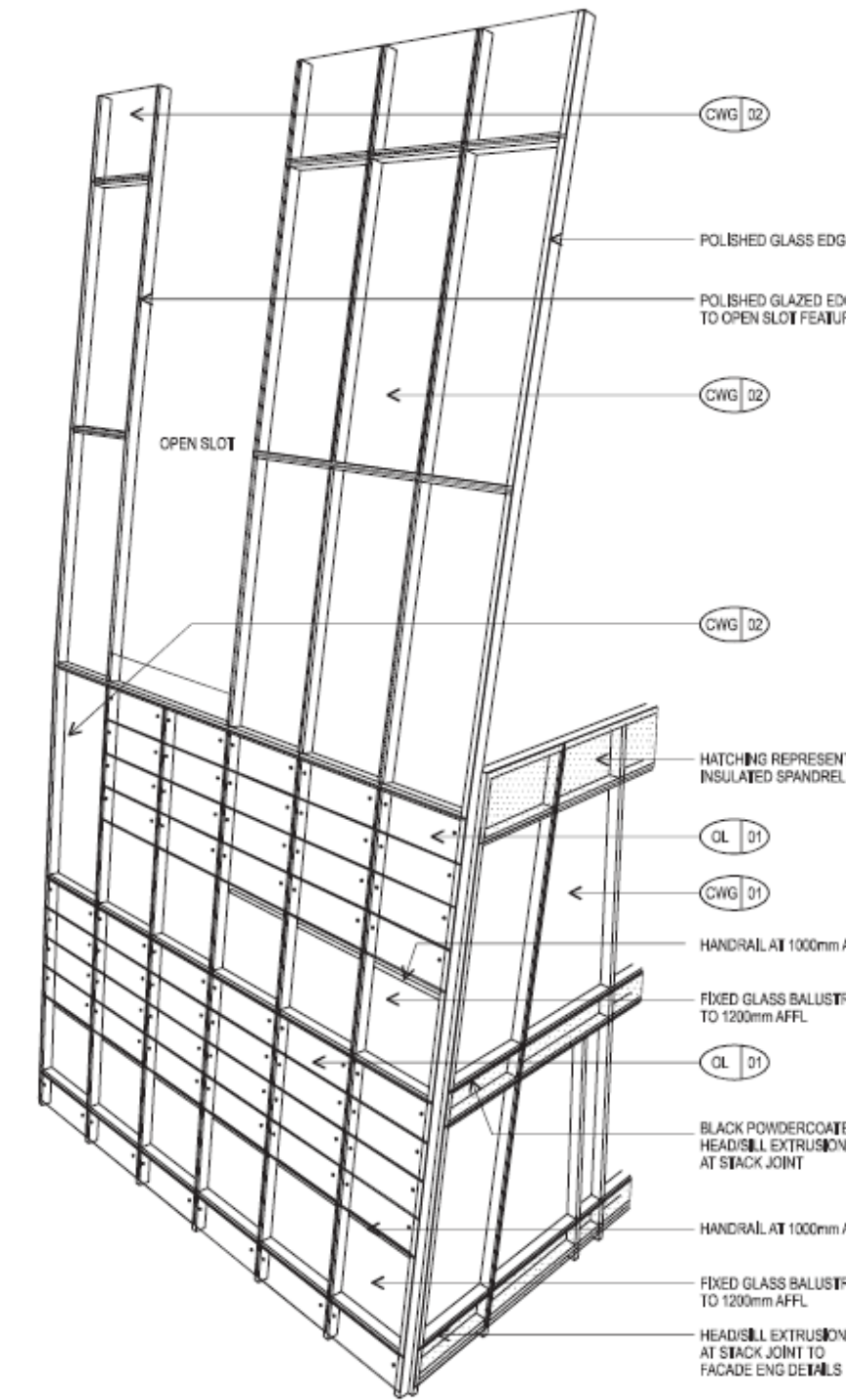
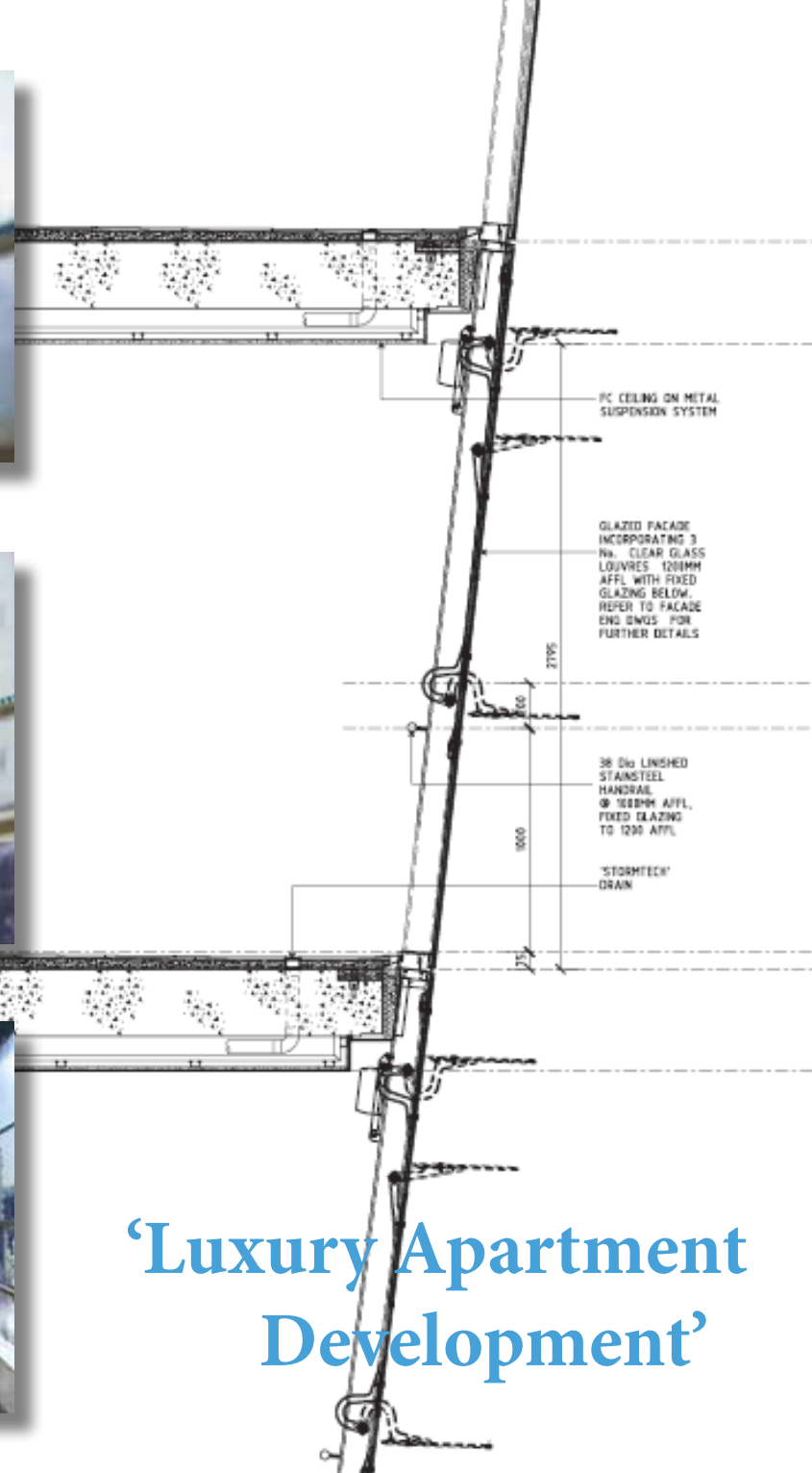
**‘Coordinated Consultant Services’**



**‘Contractor Documentation Road Map’**

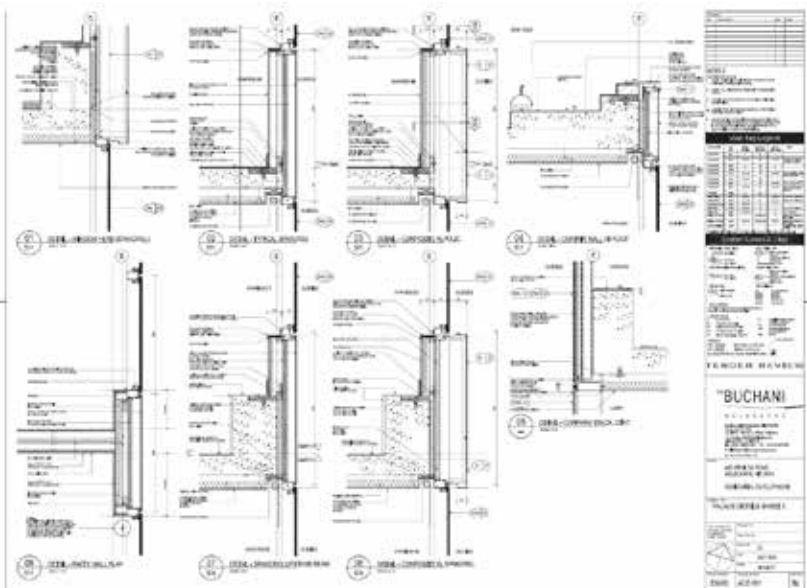
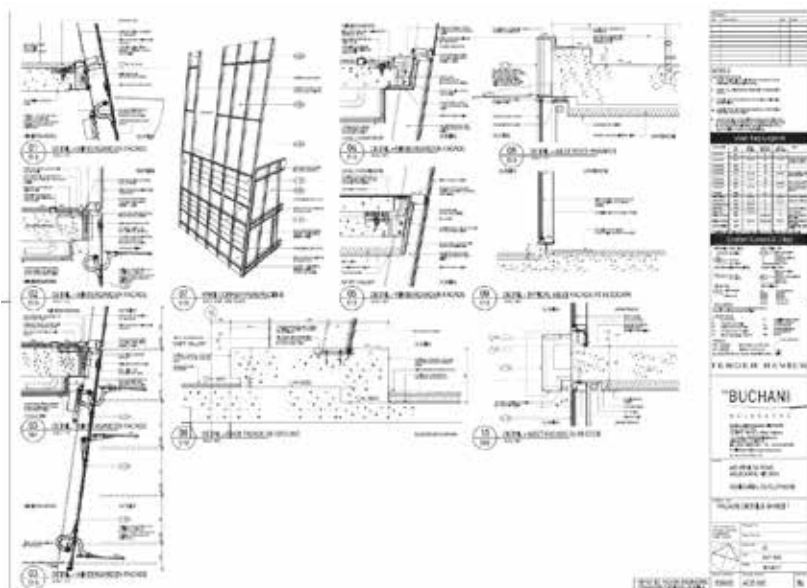
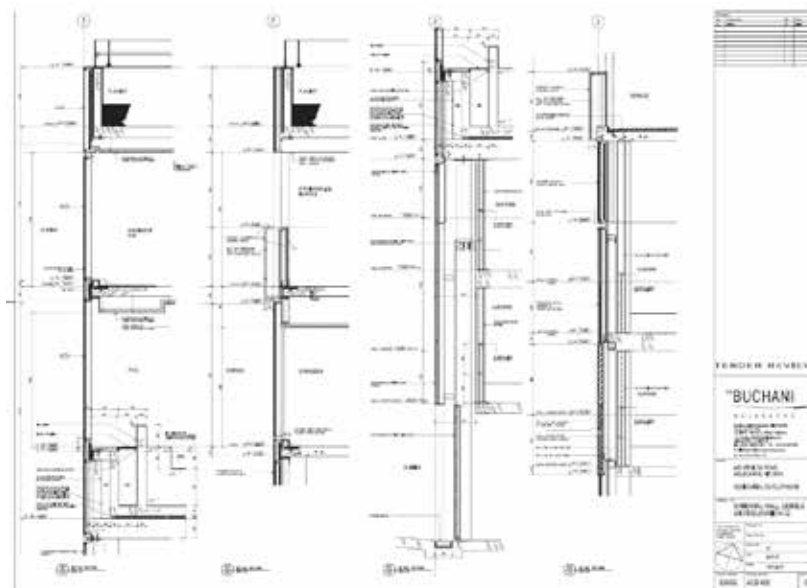
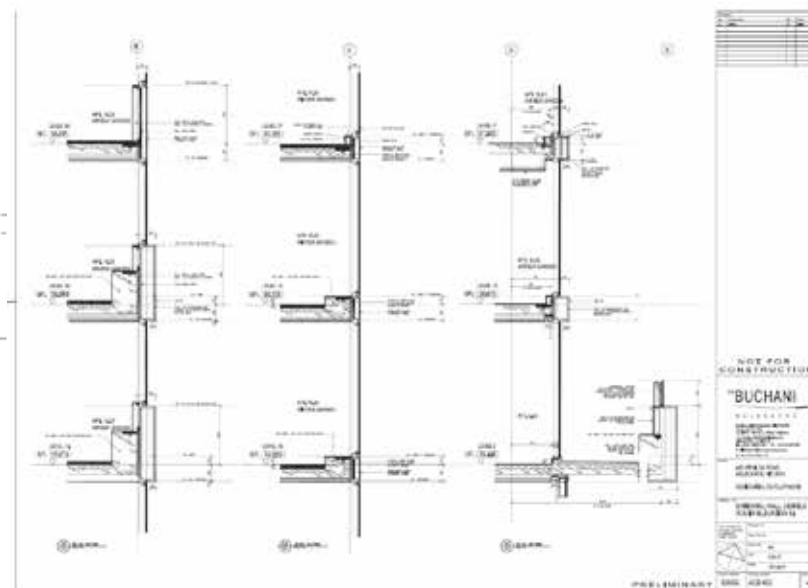
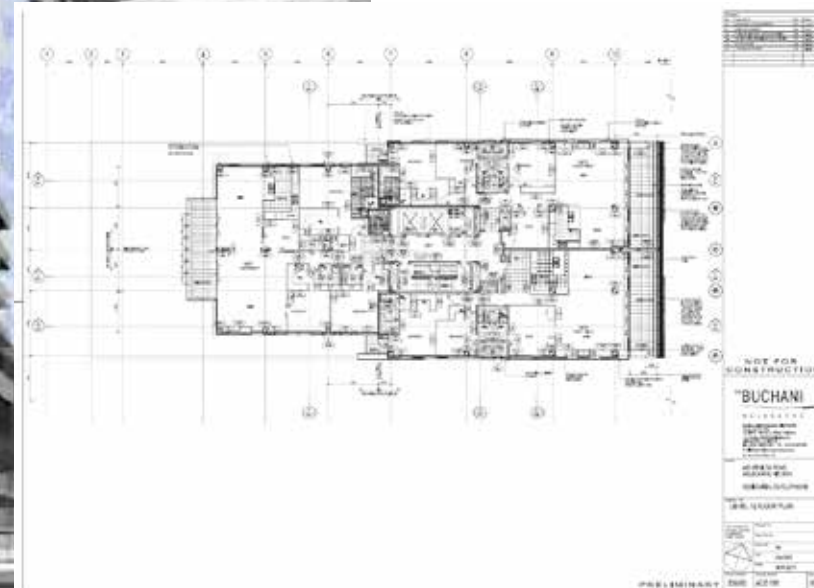






# 430 St. Kilda Road

THE BUCHAN **Lucient, Melbourne**







DUPLEX UNIT



DUPLEX UNIT



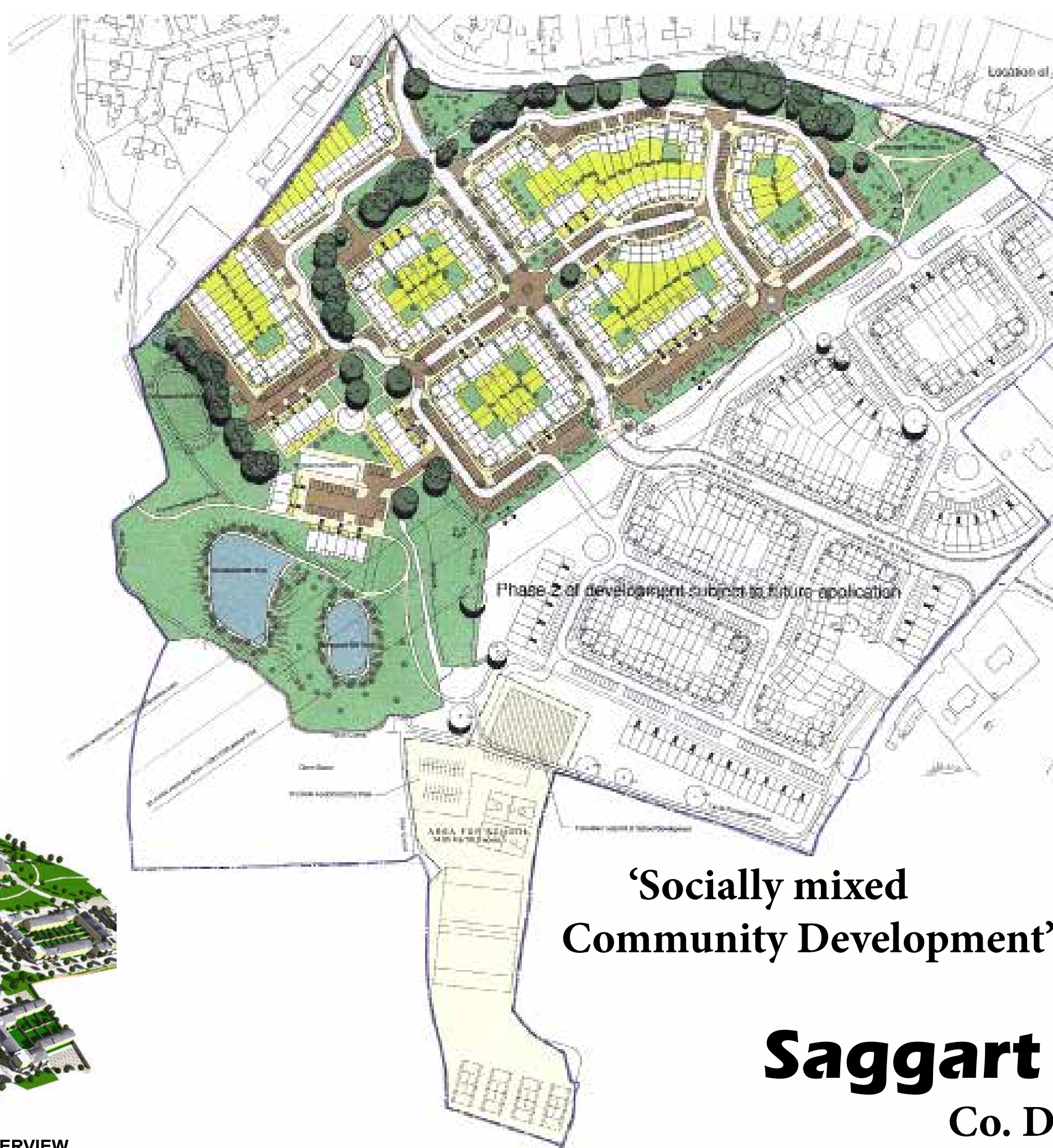
3 BED TERRACE



4 BED TERRACE



SITE OVERVIEW



‘Socially mixed  
Community Development’

**Saggart Village**  
Co. Dublin, Ireland





‘Multi-purpose  
Live Work Spaces’



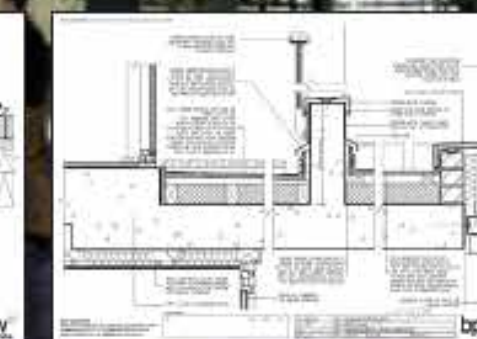
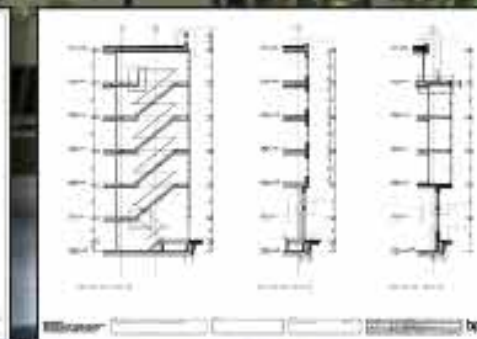
**Childers Street**  
London, UK

**Clyde Terrace**  
London, UK

bptw  
partnership

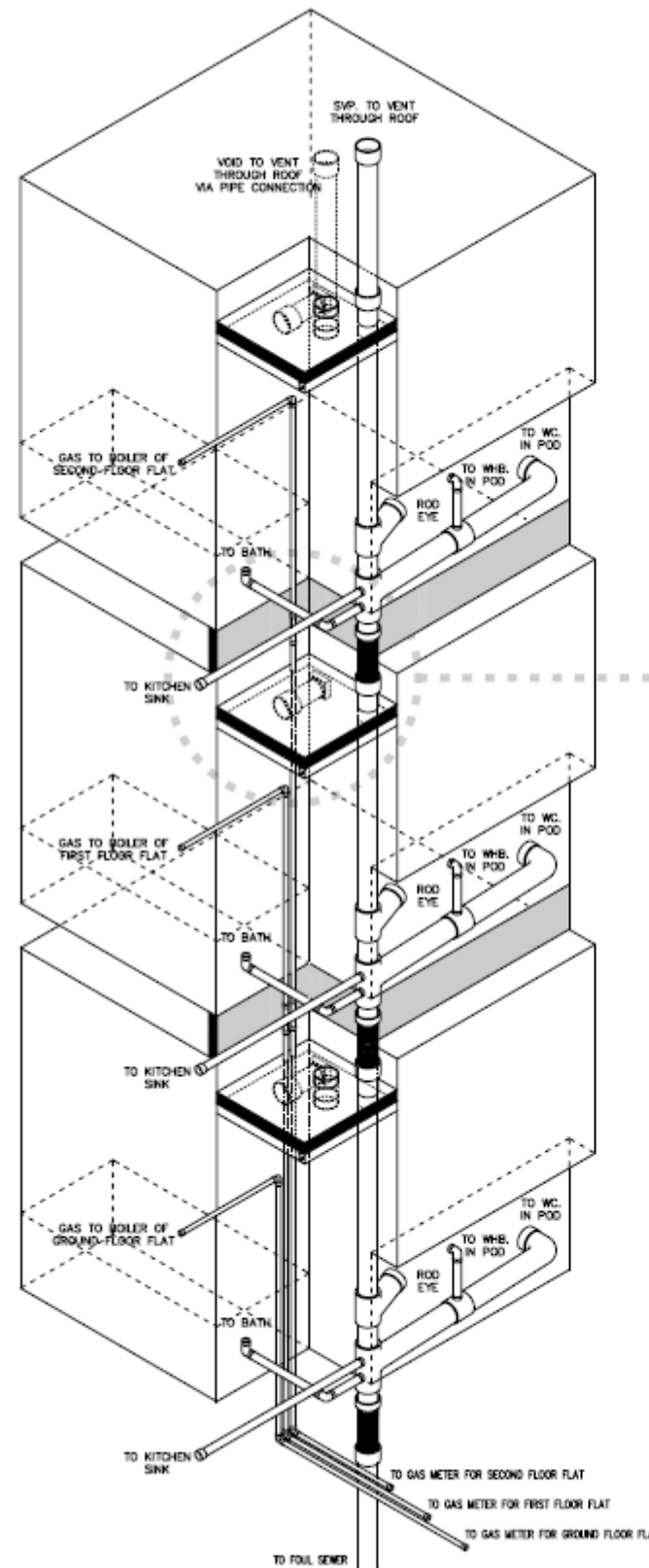


‘Mixed use  
Development’

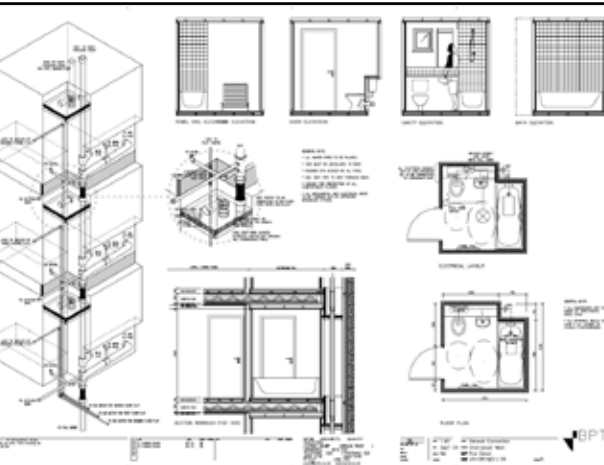
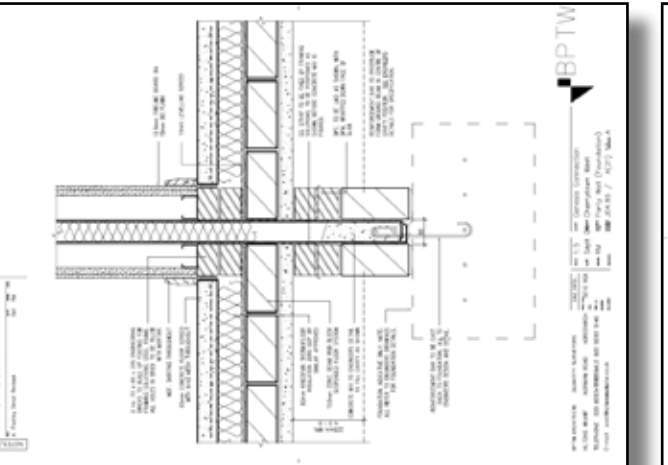
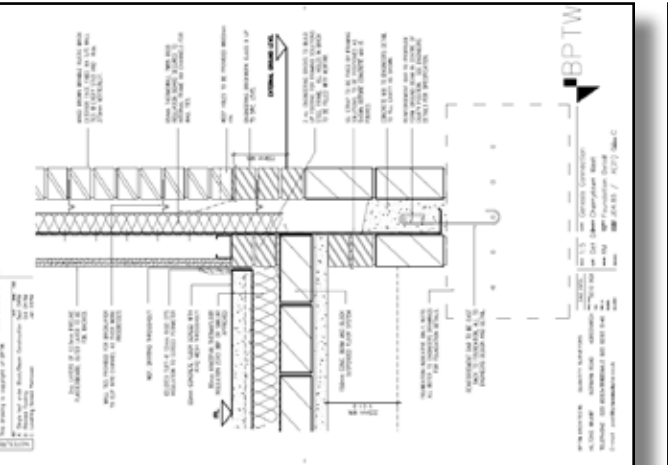
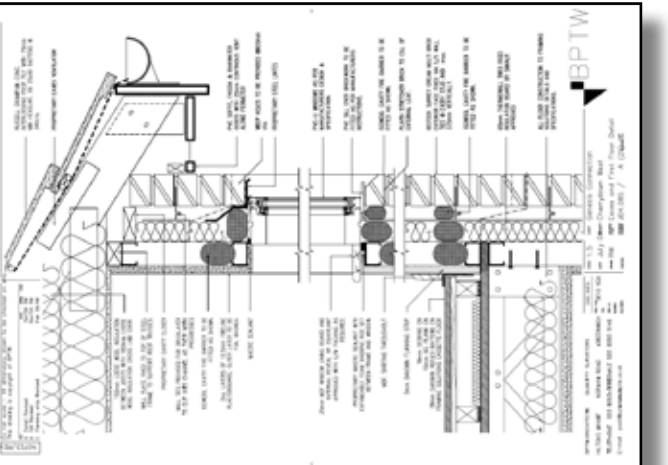
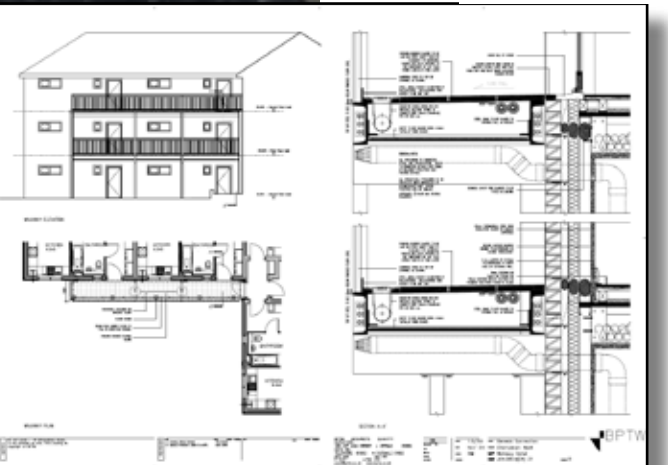
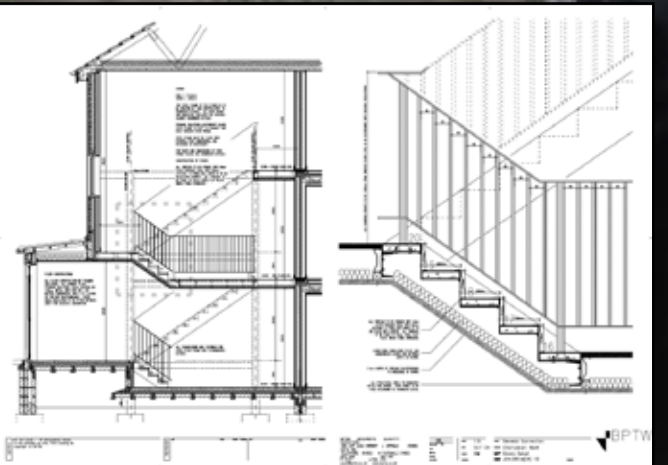
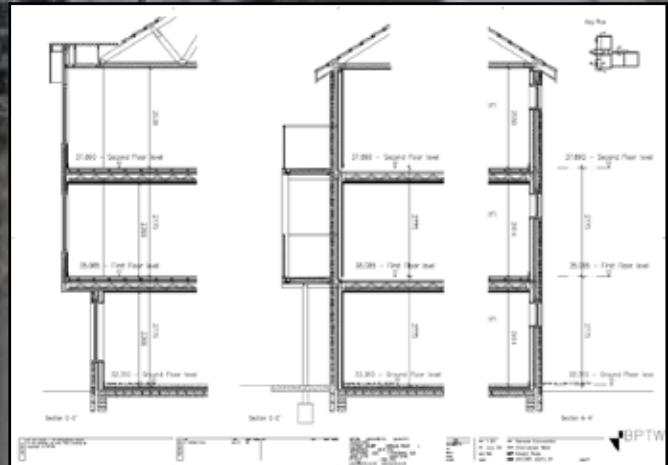
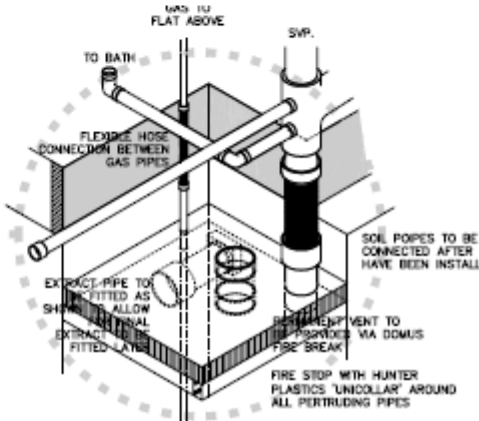




‘Part of the ODPM  
Modern Methods  
of Construction Initiative’

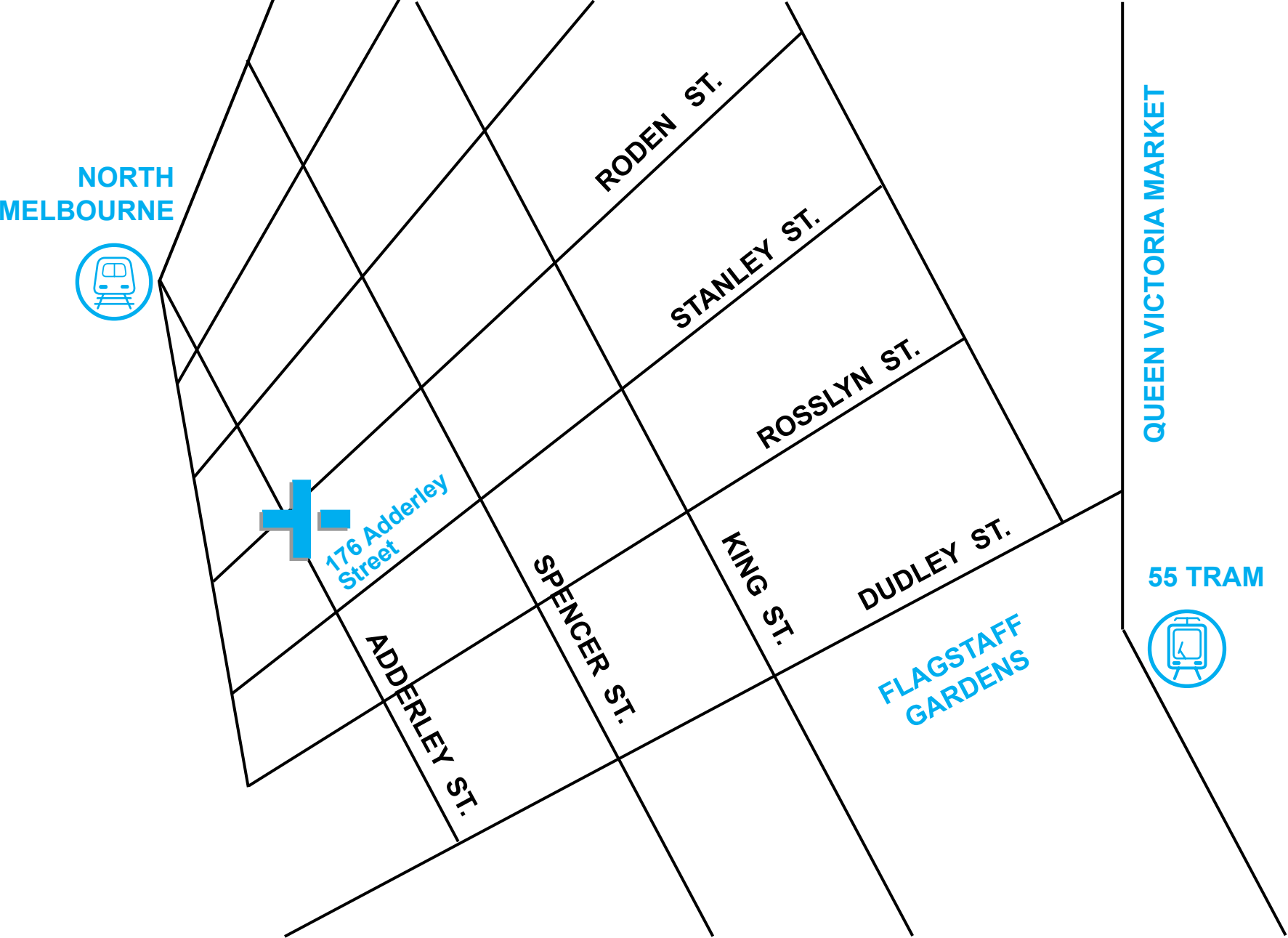


- GENERAL NOTE:
- ALL WATER PIPES TO BE PLASTIC.
  - VOD MUST BE VENTILATED TO ROOF.
  - RODDING EYE ACCESS ON ALL PODS.
  - SOIL VENT PIPE TO VENT THROUGH ROOF.
  - ENSURE FIRE PROTECTION AT ALL COMPARTMENT FLOORS.
  - ALL MECHANICAL AND ELECTRICAL WORK TO BE CARRIED OUT BY APPROVED SPECIALIST FITTERS.





# Contact Information



address **trinity+one**  
**176 Adderley Street**  
**West Melbourne**  
**VIC 3003**  
**Australia**

phone **+61 (0) 404346602**

e-mail **info@trinityplusone.com.au**