

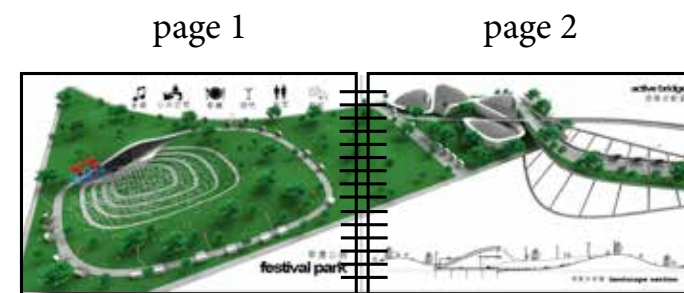


**design
documentation
consultation**

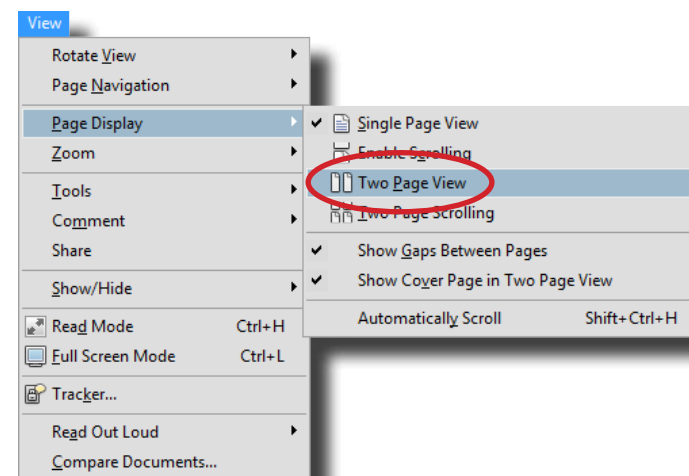
'Delivering high quality design through high end documentation'

Page Display

Before you get started on this document its best to note that it is designed to be printed at A3 and viewed as a double spread. what this meas essentially is its a magazine format.



So if your reading this on your screen in .pdf format you may want to click the following setting to make viewing that little bit better.



Overview

The following are a culmination of works by the staff of trinity+one for a variety of architectural practises over a period of 15 years.

Some of the works were carried out as part of large teams and some solely by trinity+one staff. The work does however reflect the capacity and high skill level of trinity+one staff in both producing managing and executing architectural documentation.

Its important to recognise that the works are owned and copyright to the respective architectural practise.

For any clarification in regards to the projects, please feel free to contact us.

includes works for:

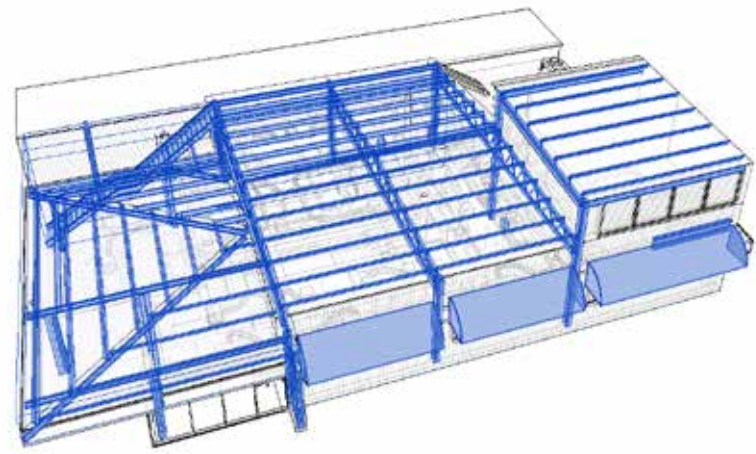
- John Wardle Architects**
- Denton Corker Marshall**
- Silver Thomas Hanly / Design Inc**
- Cox Architecture**
- ARM**
- Fender Katsalidis Architects**
- Gregory Burgess Architects**
- Spowers**
- Judd Lysenko Marshall**
- Paul Gardiner Architects**
- BPTW Partnership**
- Reddy Architecture**
- OBK Architects and Planners**
- Inhabit Design**
- PEK**
- Paul Hickman Design**
- Adrian Amore Architects**
- trinity+one**

Infrastructure

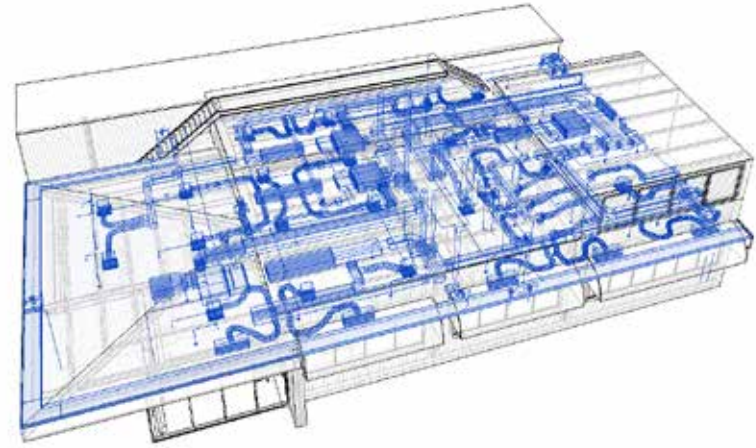
5

South Morang Rail Extension

drivers and maintenance facilities

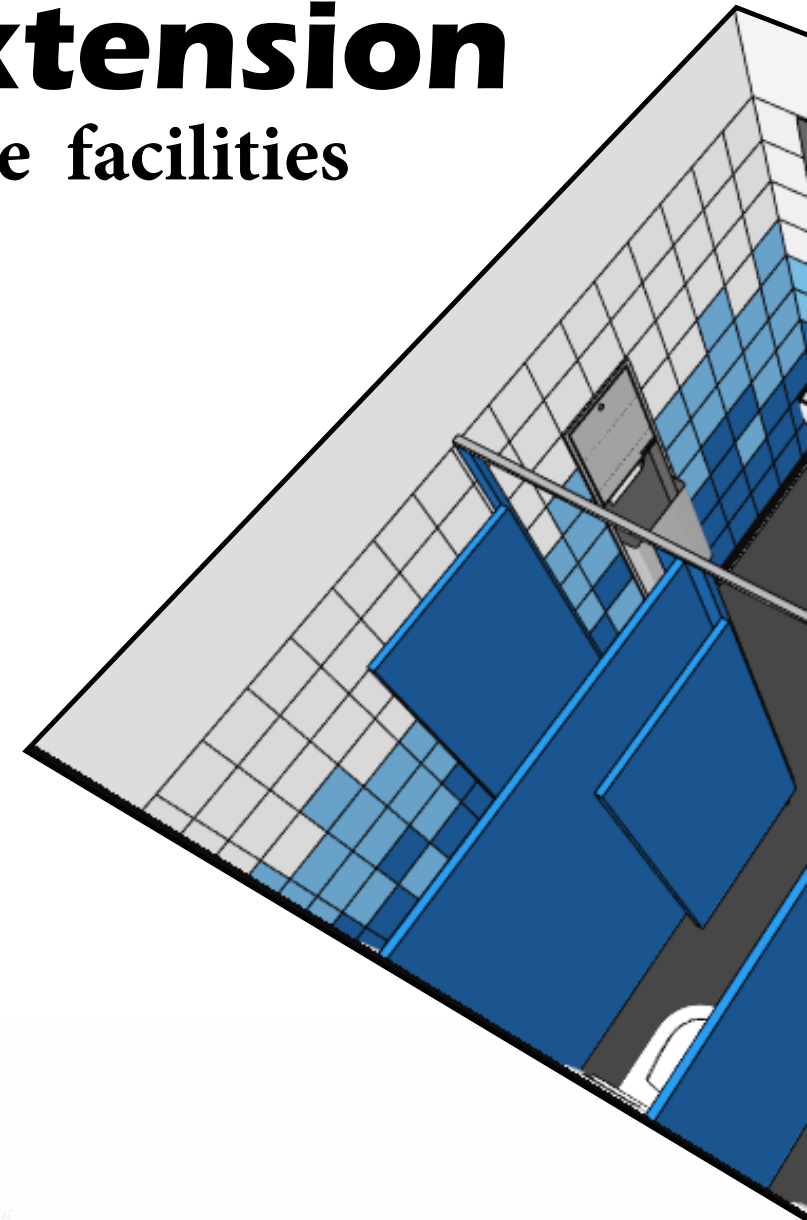


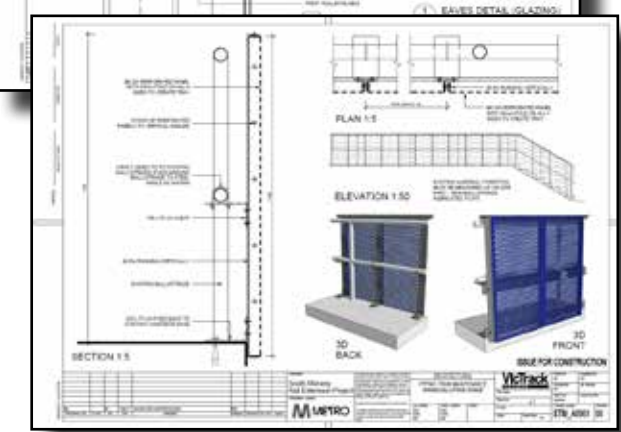
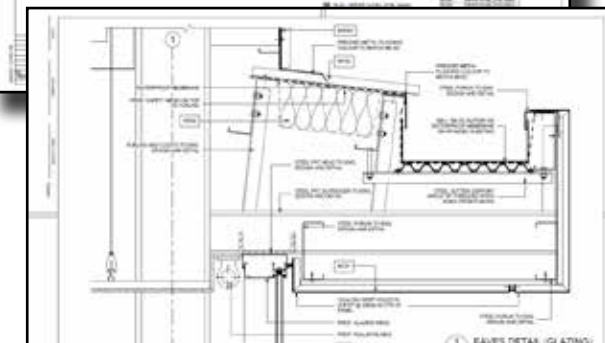
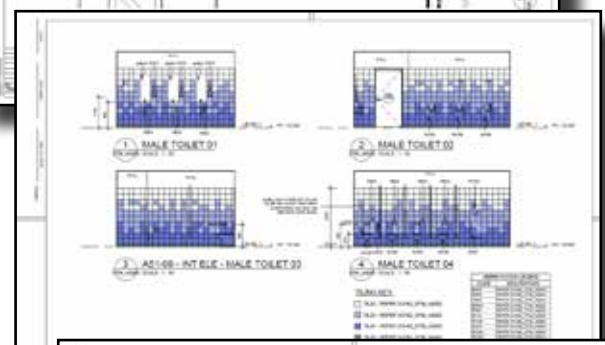
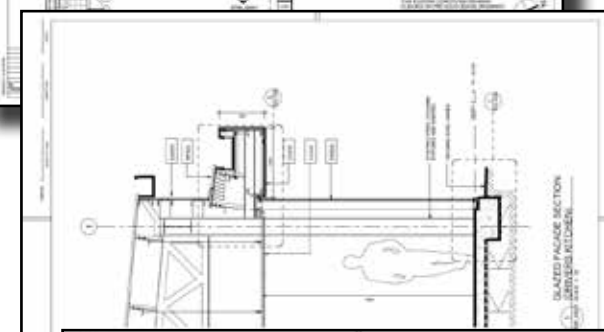
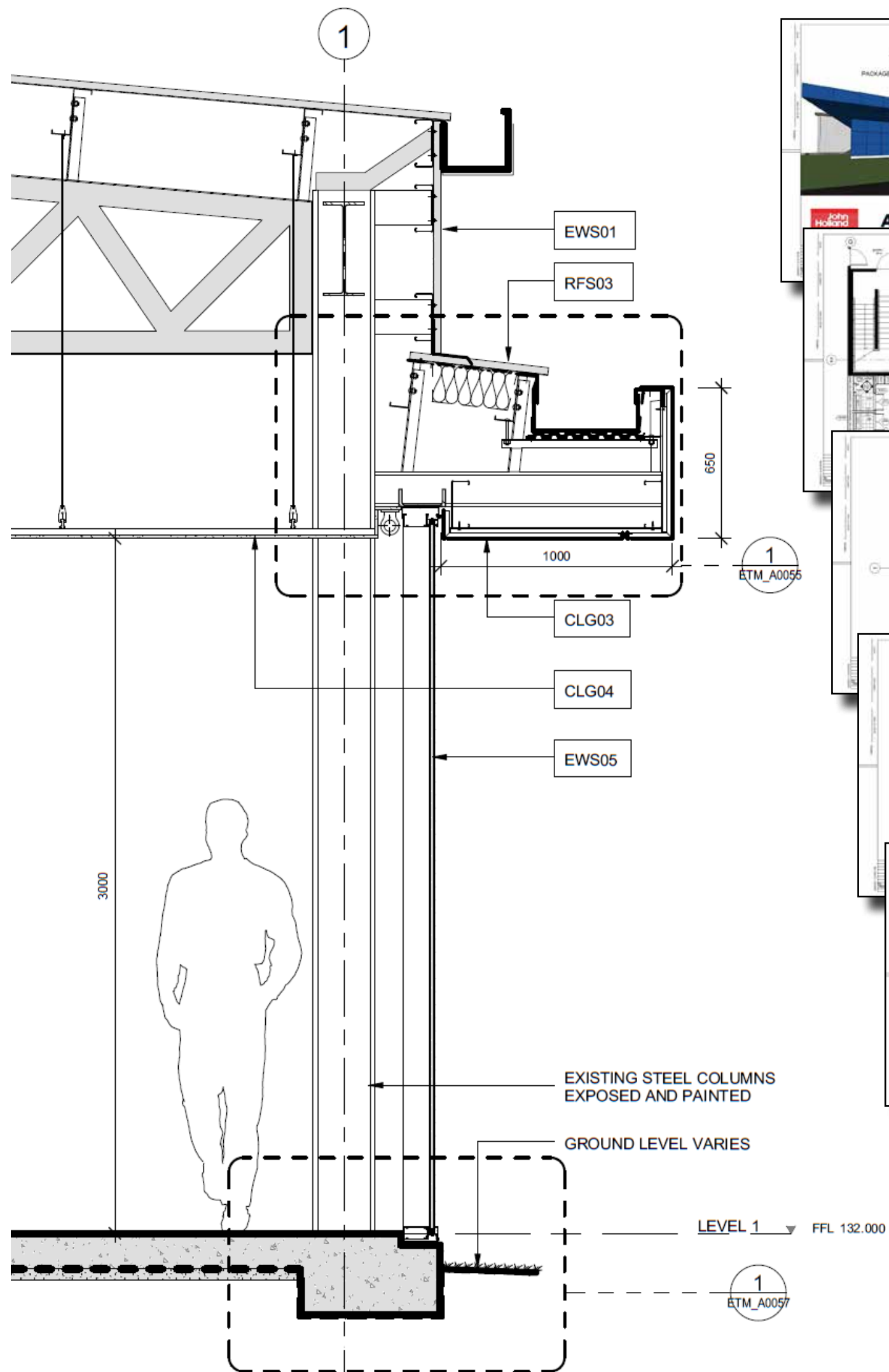
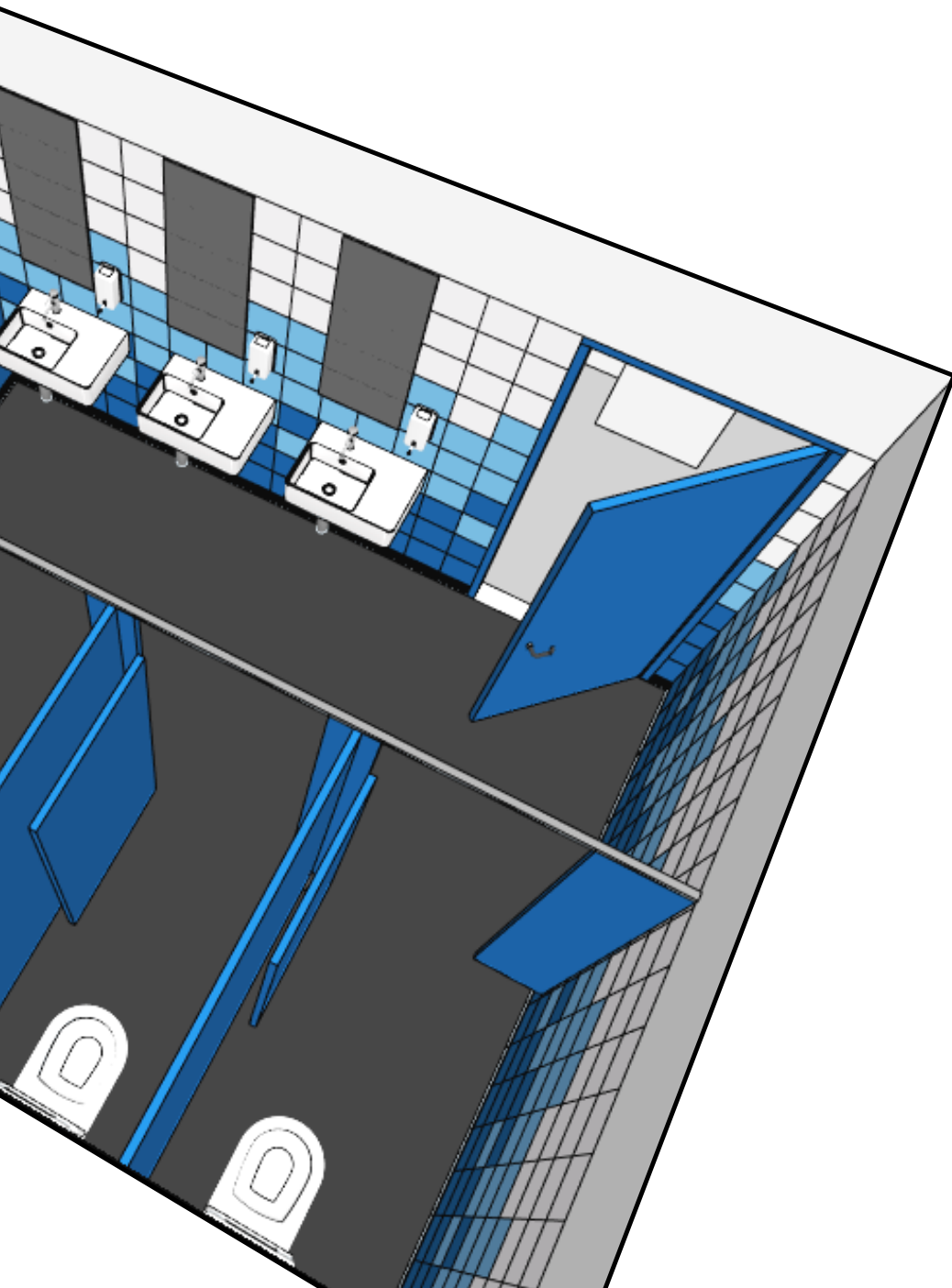
INTEGRATED STRUCTURAL MODEL



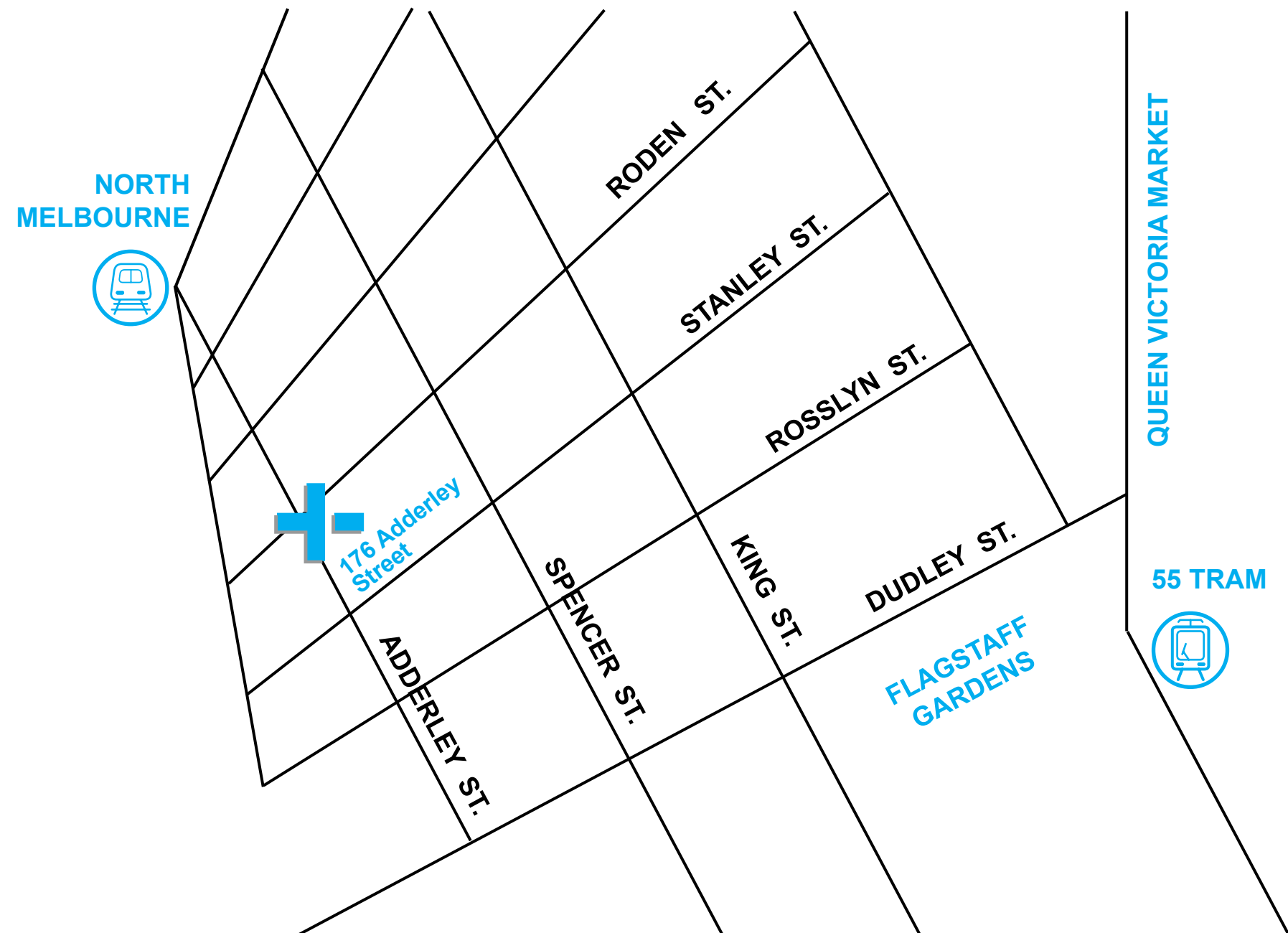
INTEGRATED MECHANICAL MODEL

‘Integrated Design
Consultant modelling’





Contact Information



address **trinity+one**
176 Adderley Street
West Melbourne
VIC 3003
Australia

phone **+61 (0) 404346602**

e-mail **info@trinityplusone.com.au**